

# VIBRANCE® DUO PERFORMS IN ALL SEASONS

Seed and soil-borne pathogens present the first risk in the cropping year. VIBRANCE® Duo is the best technical product against seed and soil-borne diseases. It gives fast emergence, proven rooting benefits and strong early crop development to ensure your wheat gets the best start.

**ACTIVE INGREDIENTS:** 25 gai/l sedaxane  
25 gai/l fludioxonil

CROPS	USE RATE	TIMING
Winter Wheat & Barley	2.0 l/t	1 application before planting
Winter Rye	2.0 l/t	
Winter Triticale	2.0 l/t	
Spring Wheat & Barley	2.0 l/t	
Spring Oats	1.0 l/t	

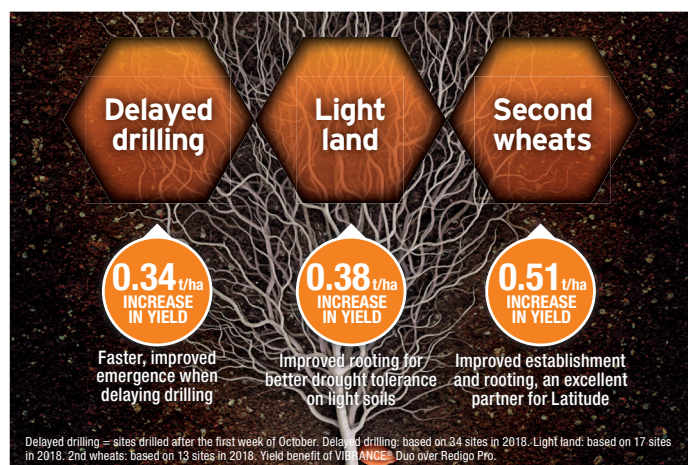
## CONTROL OF:

- ▶ **Seed-borne snow mould (*Monographella nivalis*)**
- ▶ ***Septoria nodorum***
- ▶ **Seed-borne *Fusarium culmorum***
- ▶ **Common bunt (*Tilletia caries*)**
- ▶ **Loose smut (*Ustilago tritici*)**

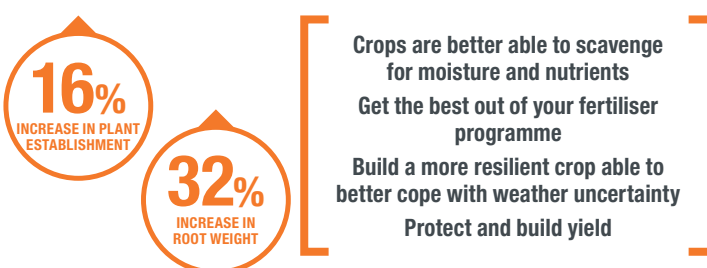
## MODERATE CONTROL OF:

- ▶ **Seed-borne ear blight (*Fusarium graminearum*)**

## VIBRANCE® DUO STILL EXCELS IN THREE KEY POSITIONS



## VIBRANCE® DUO GIVES IMPROVED ESTABLISHMENT AND INCREASED ROOTING



VIBRANCE® Duo vs Redigo Pro. Average of 49 Syngenta winter wheat trials drilled autumn 2018 and 2019.

## BUILD A RESILIENT WHEAT CROP TO COPE WITH WEATHER UNCERTAINTIES

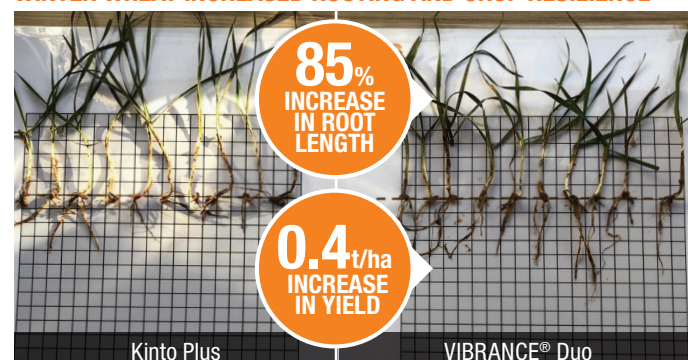
This season has been another challenging year for crop establishment. Whether you plan to drill early or late, at the time you buy your seed you don't know what the weather has in store. Building a resilient crop gives insurance against these adverse conditions.

## WINTER WHEAT IMPROVED ESTABLISHMENT IN WET CONDITIONS



Newark, Nottinghamshire drilled the season of the 'Beast from the East'.

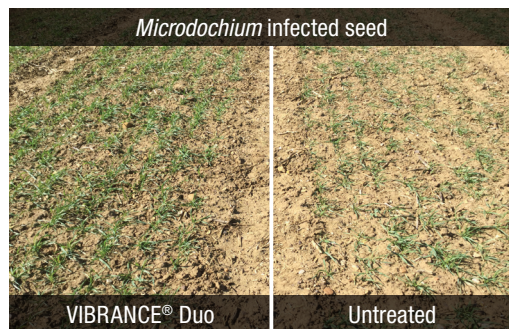
## WINTER WHEAT INCREASED ROOTING AND CROP RESILIENCE



Nuneaton, Warwickshire, SY INSITOR drilled 19th November 2021 and assessed 21st February 2022

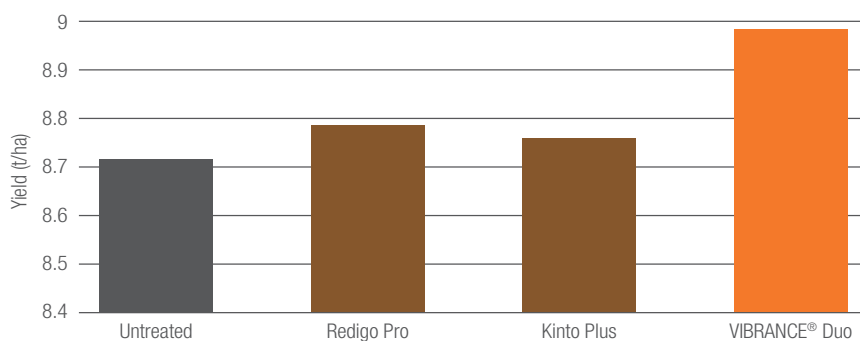
## FUNGICIDE SEED TREATMENTS ARE A KEY FEATURE IN SUSTAINABLE FARMING DON'T UNDERESTIMATE THE NEED FOR A SEED TREATMENT

Seed and soil-borne pathogens present the first risk in the cropping year. VIBRANCE® Duo is the best technical product against seed and soil-borne diseases. It gives fast emergence, proven rooting benefits and strong early crop development to ensure your wheat gets the best start.



Nottinghamshire, KWS Barrel winter wheat, 28% *Microdochium* infected seed, light soil drilled November 2020. Picture taken 29/03/21.

### VIBRANCE® DUO GIVES EXCELLENT CONTROL OF *MICRODOCHIUM*



Source: Average of 4 Syngenta *Microdochium* winter wheat trials drilled autumn 2020.

## VIBRANCE® DUO IMPROVES ESTABLISHMENT AND ROOTING ACROSS REDUCED CULTIVATIONS IN WHEAT

Where practical, many farming systems use minimum tillage or direct drill for environmental, cost and time saving reasons. Improving establishment and rooting using VIBRANCE® Duo in these scenarios helps to protect yield.

	<b>Ploughed</b>		<b>Direct drilled and rolled</b>
<p><b>32% INCREASE IN ROOTING</b></p> <p><b>54% INCREASE IN FOLIAGE WEIGHT</b></p> <p><b>17% INCREASE IN TILLERING</b></p> <p><b>8% INCREASE IN PLANT ESTABLISHMENT</b></p>		<p><b>91% INCREASE IN ROOTING</b></p> <p><b>47% INCREASE IN FOLIAGE WEIGHT</b></p> <p><b>30% INCREASE IN TILLERING</b></p> <p><b>7% INCREASE IN PLANT ESTABLISHMENT</b></p>	
	VIBRANCE® Duo    Redigo Pro		VIBRANCE® Duo    Redigo Pro

Shipston on Stour, Warwickshire. Heavy soil. Drilled 29/10/17.

