

BEDROCK™ COMBINES TWO LATE BLIGHT ACTIVE FUNGICIDES FOR STRONG PROTECTIVE AND CURATIVE CONTROL WITH EXCELLENT RAINFASTNESS

- Potato Late Blight (*Phytophthora infestans*) is a devastating disease that has a massive impact on both yield and quality
- Using IPM practices and fungicides, like BEDROCK™, is necessary to reduce the disease's impact

APPLICATION GUIDANCE

While CAA resistant strains have not been confirmed in the UK via the Fight Against Blight (FAB) programme:

- Apply BEDROCK™ preferably in a preventive manner.
- The co-formulation of these two actives helps to reduce the selection pressure of resistant strains.
- Apply BEDROCK™ always at recommended dose rates.
- Preferably alternate use of BEDROCK™ with actives that are not in FRAC Group 40. However, do not apply more than **2 consecutive applications** or any other CAA containing fungicide.

Once CAA resistant strains are confirmed in UK via FAB, BEDROCK™ must be:

Mixed with another active effective against late blight.

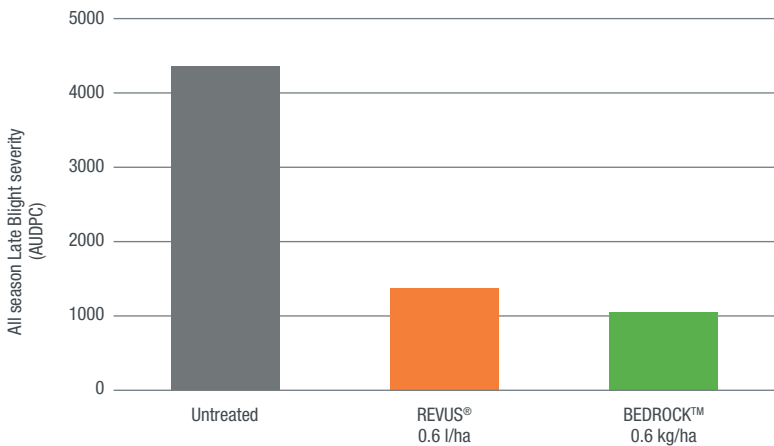
- **OR** strictly alternated with actives that are not in FRAC Group 40.



EUROBLIGHT FUNGICIDE TABLE

PRODUCT	BEDROCK™	REVUS®	Ranman Top	Infinito	Manzate
LEAF BLIGHT RATING	4.4	4.0	3.8	3.8	2.0
PROTECTANT	● ● ●	● ● ●	● ● ●	● ● ●	● ●
CURATIVE	● ●	●		● ●	
RAINFASTNESS	● ● ●	● ● ●	● ● ●	● ● ●	● ●
ACTIVE INGREDIENTS	mandipropamid + cymoxanil	mandipropamid	cyazofamid	Propamocarb + fluopicolide	mancozeb

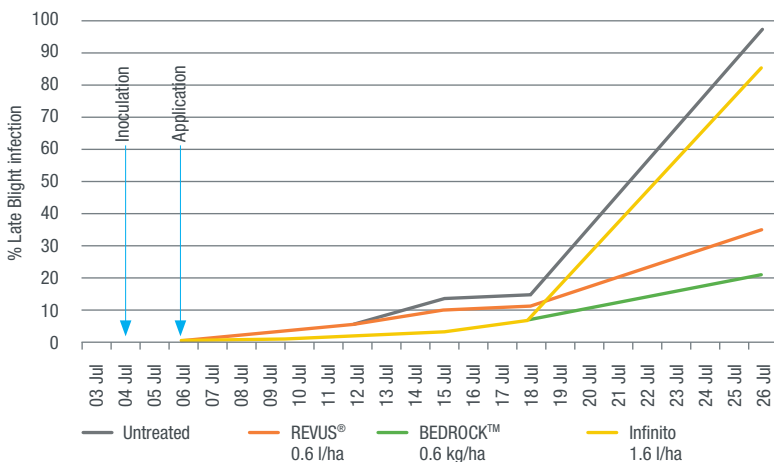
IMPROVED LATE BLIGHT CONTROL WITH BEDROCK™ TRIAL RESULTS 2019



- Both REVUS® & BEDROCK™ demonstrated significant control of late blight
- The combination of cymoxanil with mandipropamid achieves a significant level of control over straight mandipropamid

Variety: Melody
Blight strains inoculated: EU_6_A1, EU_13_A2 & EU_37_A2
Planting date: 22 May 2019
Location: Derbyshire, UK
 Both treatments applied at 11 times

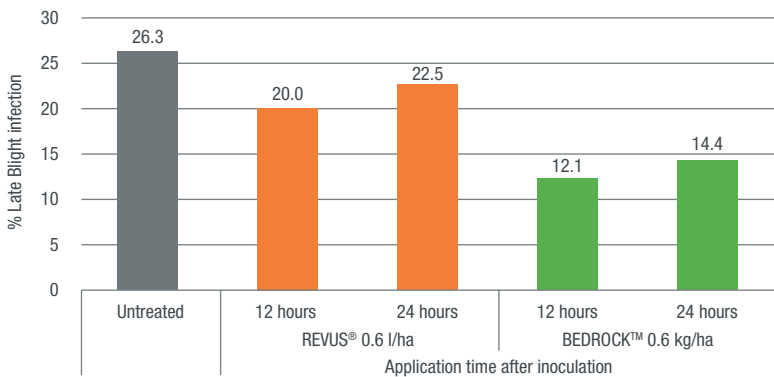
1 APPLICATION 36HRS AFTER INOCULATION



- BEDROCK™ gives robust kick-back activity on late blight
- BEDROCK™ outperformed Infinito

Blight strains inoculated: EU_13
Planting date: 2011
Location: Netherlands

CURATIVE BENEFIT OF BEDROCK™ ASSESSMENT 7 DAYS AFTER INOCULATION



- Curative benefit of BEDROCK™ demonstrates improved late blight control over REVUS®

Variety: Fontane
Blight strains: EU_13_A2, EU_36_A2 & EU_37_A2
Planting year: 2021
Location: Netherlands

BEDROCK™ SUMMARY ON POTATOES

Active: mandipropamid 250g/l + cymoxanil 180g/l

Formulation: Water dispersible granule (WG)

Maximum individual dose: 0.6 kg/ha

Maximum no. of treatments: 6 per crop

Rain-fastness: 15 minutes

Latest time of application: 7 days before harvest

Comments:

- Can be used on all varieties, including seed crops
- Excellent product that can be used at any time in the late blight programme
- BEDROCK™ is supported with a range of drift retardants including Vigilant

