



Touchdown Quattro®



GROUP 9 HERBICIDE

Product registration number MAPP 10608

Touchdown Quattro is an aqueous concentrate containing 360 g/l glyphosate, a surfactant and water conditioning system.

A systemic herbicide for the control of a wide range of annual and perennial weeds pre-harvest in wheat, barley, oilseed rape, mustards, linseed, combining peas and field beans, in stubbles, green cover on land not being used for crop production and natural surfaces not intended to bear vegetation, before drilling or planting any crop, post drilling or planting and crop emergence, for destruction of grassland and for desiccation of oilseed rape and mustards.

The (COSHH) Control of Substances Hazardous to Health Regulations may apply to the use of this product at work

Syngenta UK Limited,
Jealott's Hill International Research Centre,
Bracknell, Berkshire, RG42 6EY,
Tel +44 (0) 1223 883400

**In case of toxic or transport emergency ring
+44 (0) 1484 538444 any time.**

**PROTECT FROM FROST
MIX THOROUGHLY BEFORE USE**

This container should be handled only by mechanical means.

DO NOT USE OR KEEP TOUCHDOWN QUATTRO IN GALVANISED OR UNLINED MILD STEEL SPRAY TANKS OR CONTAINERS. DO NOT LEAVE SPRAY MIXTURE IN TANK FOR LONG PERIODS AND MAKE SURE TANKS ARE WELL VENTED.

SAFETY PRECAUTIONS

(a) Operator Protection

Engineering control of operator exposure must be used where reasonably practicable in addition to the following personal protective equipment:

WEAR SUITABLE PROTECTIVE GLOVES when handling the concentrate and applying through hand held equipment.

However, engineering controls may replace personal protective equipment if a COSHH assessment shows they provide an equal or higher standard of protection.

WASH HANDS AND EXPOSED SKIN before eating, drinking or smoking and after work.

IF YOU FEEL UNWELL, seek medical advice (show label where possible).

(b) Environmental protection

KEEP LIVESTOCK OUT OF TREATED AREAS.

DO NOT USE ON GRASSLAND if the crop is to be used as animal feed or bedding.

Do not contaminate water with the product or its container.

Do not clean application equipment near surface water.

Avoid contamination via drains from farmyards and roads.

(c) Storage and disposal

KEEP IN ORIGINAL CONTAINER, tightly closed in a safe place.

RINSE CONTAINER THOROUGHLY by using an integrated pressure rinsing device or manually rinsing three times. Add washings to sprayer at time of filling and dispose of safely.



The
Voluntary
Initiative

This product label is compliant with the CPA Voluntary Initiative (VI) guidance.

20 litres

Product names marked ® or ™, the ALLIANCE FRAME logo, the SYNGENTA Logo and the PURPOSE ICON are Trademarks of a Syngenta Group Company

L1132736 GBRI/01D PPE 4225976

TOUCHDOWN QUATTRO®

An aqueous concentrate containing 360 g/l glyphosate.

Toxic to aquatic life with long lasting effects.

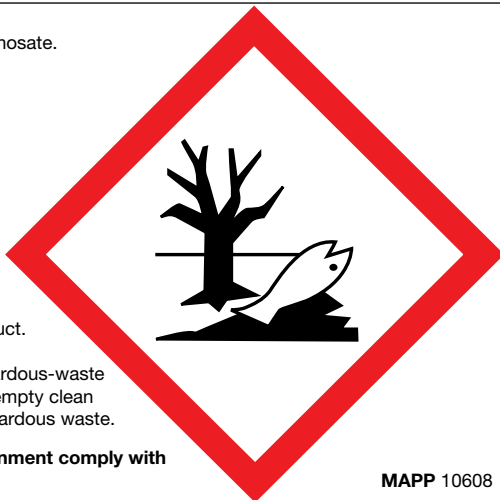
Keep out of reach of children.

Do not eat, drink or smoke when using this product.

Collect spillage.

Dispose of contents/container to a licensed hazardous-waste disposal contractor or collection site except for empty clean containers which can be disposed of as non-hazardous waste.

To avoid risks to human health and the environment comply with the instructions for use.



MAPP 10608

IMPORTANT INFORMATION

FOR USE ONLY AS AN AGRICULTURAL / HORTICULTURAL / INDUSTRIAL HERBICIDE

For use on:

Crops/situations	Maximum individual dose (litres product/ha)	Maximum total dose (litres/ product/ha)	Latest time of application
Barley, wheat	4.0	4	7 days before harvest
Oilseed rape and linseed	4.0	4	14 days before harvest
Mustard	4.0	4	8 days before harvest
Wheat, barley, oilseed rape, mustard, linseed, combining peas, vining peas, field beans, bulb onions, durum wheat, leek, oats, potato, salad onions, sugar beet, swede, turnip, asparagus	1.5	1.5	Pre emergence (ensure spraying precedes ANY crop emergence)
All edible crops (before planting), all edible crops (stubble), all non-edible crops (before planting), all non-edible crops (stubble)	4.0	4	5 days before cultivation, drilling or planting of the following crop
	1.5	1.5	2 days before drilling or planting of the following crop or 24 hours before cultivating
Combining peas and field bean	3.0	3	7 days before harvest
Green cover on land not being used for crop production	6.0	6	5 days before cultivation, drilling or planting of the following crop
Grassland (destruction), hard surfaces, natural surfaces not intended to bear vegetation, permeable surfaces overlying soil	6.0	-	-

***Other specific restrictions:** Livestock must be kept out of treated areas until poisonous weeds such as ragwort have died and become unpalatable. For use on handheld rotary atomiser, the spray droplet spectra must be a minimum Volume Median Diameter (VDM) of 200 microns. The product must not be used on grassland if the crop is to be used as animal feed or bedding.

READ THE LABEL BEFORE USE. USING THIS PRODUCT IN A MANNER THAT IS INCONSISTENT WITH THE LABEL MAY BE AN OFFENCE. FOLLOW THE CODE OF PRACTICE FOR USING PLANT PROTECTION PRODUCTS.

This leaflet is part of the approved Product Label.

DIRECTIONS FOR USE

IMPORTANT: This information is authorised as part of the Product Label. All instructions within this section must be carefully read in order to obtain safe and successful use of this product.

CONDITIONS FOR OPTIMUM USE

TOUCHDOWN QUATTRO applied to foliage is translocated throughout the plant, controlling all parts including roots, rhizomes or stolons. After treatment, discolouration of the leaves is seen first on grass weeds but takes longer to appear on broad-leaved weeds. The time for complete kill of weeds depends on species and growing conditions, and may vary from a few days to a few weeks.

TOUCHDOWN QUATTRO is quickly deactivated and degraded in soil. Once a sufficient interval for translocation into the weeds has elapsed (as specified below), any crop can be safely drilled or planted. A slight growth check may occasionally be seen, particularly where herbicide traces remain in decaying trash from previously treated crops or weeds. Disperse or bury such decaying matter by thorough cultivation.

To allow TOUCHDOWN QUATTRO to translocate to maximum effect, it is important that perennial weeds are not broken up before treatment, so do not cultivate before spraying. In order to allow full translocation of TOUCHDOWN QUATTRO, do not apply other pesticides, lime, fertilizer or farmyard manure either before or within 5 days after application of this product.

Extreme care must be taken to avoid spray drift as this can severely damage neighbouring crops or non-crop plants outside the target area. Do not spray in windy weather, especially if applying a spray with smaller droplet size.

In good growing conditions TOUCHDOWN QUATTRO is rainfast within 6 hours. Where weed growth and uptake is slowed by adverse conditions, a rain-free period of up to 24 hours following spraying may be necessary. For best results, TOUCHDOWN QUATTRO should be applied to a dry target.

WEEDS CONTROLLED

OPTIMUM CONTROL OF WEEDS

For best control, apply TOUCHDOWN QUATTRO to weeds which are actively growing, with enough leaf to absorb the product. Weeds are less susceptible to this product when growth is restricted by natural senescence or by factors such as drought, waterlogging, frost or high temperature. Such conditions at, or soon after, spraying may result in reduced control.

Where a range of dose rates is given for control of Common Couch (marked #), the full rate of 4.0 litres per hectare will give the best and most reliable control. Rates may be reduced within the range indicated where weed growth is suitable and in good growing conditions. Reduced rates may give less than optimum levels of control, and should only be used where such control may be tolerated, as in the case of maintenance control of lower weed populations.

The TOUCHDOWN QUATTRO formulation has been fully optimised such that additional tank mix adjuvants are not required when applying at minimum rates recommended on this label.

Strains of some annual grasses (e.g. black-grass, wild oats and Italian rye-grass) have developed resistance to herbicides which may lead to poor control. A strategy for preventing and managing such resistance should be adopted. Guidelines have been produced by the Weed Resistance Action Group and copies are available from the HGCA, CPA, your distributor, crop advisor or product manufacturer.

TIMING FOR OPTIMUM CONTROL OF WEEDS

Common Couch and other perennial grass weeds	Treat only when a full emergence of actively growing green leaf is reached. Common Couch reaches this susceptible stage of growth from the beginning of tillering and new rhizome growth, usually when plants have 4 or 5 leaves with at least 10 cm of new growth.
Perennial broad-leaved weeds	Best treated when actively growing and at or near flowering, but before senescence begins.
Annual weeds	Must be actively growing, with sufficient leaf area for uptake of the spray. Annual grasses should have at least 5 cm of leaf and annual broad-leaved weeds at least 2 expanded true leaves before spraying. Annual weeds emerging after treatment will not be controlled.

CROP SPECIFIC INFORMATION

PRE-HARVEST USE IN WHEAT, BARLEY, OILSEED RAPE, MUSTARDS, LINSEED, COMBINING PEAS AND FIELD BEANS

CROPS

All varieties of wheat, barley, oilseed rape, mustards, linseed, combining peas and field beans may be treated to control annual weeds and perennial weeds such as Common Couch in following crops. To allow direct combining of oilseed rape, mustards and linseed, TOUCHDOWN QUATTRO can be used to desiccate the crop prior to harvest. TOUCHDOWN QUATTRO may be applied to all cereals to be used for feed, to wheat crops intended for milling, to barley crops intended for malt and to oilseed rape and linseed for crushing. DO NOT treat crops grown for seed, or undersown crops. Consult your grain merchant before treating any crop being grown on a contract.

CONDITIONS FOR USE

CEREALS

Apply to wheat or barley at least 7 days before harvest. All cereal grain must be under 30% moisture content. If dull weather persists after application allow up to 14 days before harvest, particularly on broad-leaved weeds.

OILSEED RAPE AND MUSTARDS

Do not treat oilseed rape until the crop seeds have less than 30% moisture content. This is not likely to be before BBCH Growth Stage 85 (50% of pods fully ripe, seeds black and hard) has been reached across the whole field to be treated. Apply to oilseed rape 14 to 21 days before harvest and to mustards 8 to 10 days before harvest. DO NOT treat laid crops with significant levels of green growth, or crops with areas of uneven ripening due to factors such as bird damage or poor drainage.

LINSEED

Apply to linseed when crop seeds have less than 30% moisture content, at least 14 days before harvest. A delay of up to 28 days may be necessary prior to combine harvesting.

COMBINING PEAS AND FIELD BEANS

Apply to combining peas and field beans when seeds have less than 30% moisture content, at least 7 days before harvest. If dull weather persists after application allow up to 14 days before harvest - particularly on broad-leaved weeds.

Straw may be chopped and incorporated, or used for all purposes except as a horticultural mulch or growing medium. Normal cultivation may be made after straw removal. Direct drilling may be used in fields suitable for this technique. Allow at least 14 days after spraying TOUCHDOWN QUATTRO before cultivating or direct drilling.

RATES OF USE - WEED CONTROL

Weeds are controlled by TOUCHDOWN QUATTRO at rates shown. Select the lowest rate which controls all required weeds.

Weed / Use	Crop	Rate: litres per hectare	Notes On Use
Common Couch.	Cereals Oilseed rape Linseed Mustards	2.0* to 4.0#	For best control use the full rate. Rates may be reduced as shown in good growing conditions, and where weed growth stage is suitable#.
	Peas for dry harvesting Field beans	3.0#	Longer term control of common couch may be reduced#.
Other perennial grassweeds. Perennial broad-leaved weeds.	Cereals Oilseed rape Linseed Mustards	4.0	All infestation levels.
	Peas for dry harvesting Field beans	3.0#	Longer term control of perennial grass weeds and perennial broad-leaved weeds may be reduced#.
Annual broad-leaved weeds ¹ .	Cereals Oilseed rape Linseed Mustards	1.5	All infestation levels.
Annual grasses.	Peas for dry harvesting Field beans	1.5	All infestation levels.

Harvest aid. Annual grasses, Crop Stems and leaves	Cereals	1.0	At the harvest aid rate, volunteer wheat and wheat crops may require up to 14 days before harvest.
--	---------	-----	--

* See 'Optimum Control Of Weeds'

¹ CAUTION: Volunteer Potatoes, Small Nettle, Rosebay Willowherb and *Polygonum* spp. will not be controlled at these lower application rates.

RATES OF USE - CROP DESICCATION

Crop	Rate (litres/hectare)	Notes on use
Oilseed rape Mustards	3.0	Apply to standing crops of oilseed rape and mustards when the crop seeds have less than 30% moisture content. Apply to oilseed rape 14-21 days before harvest and to mustards 8-10 days before harvest. DO NOT treat laid crops with significant levels of green growth, or crops with areas of uneven ripening due to factors such as bird damage or poor drainage.
Linseed		When applied to linseed for weed control at doses above 3 l/ha, TOUCHDOWN QUATTRO will provide a level of desiccation of the crop*
* This product may not provide adequate desiccation of linseed in all circumstances. Where users need rapid desiccation and the control of perennial weeds is not a requirement, Syngenta recommends the use of 'Reglone' (MAPP 10534/PCS No. 02453).		

APPLICATION

Apply TOUCHDOWN QUATTRO pre-harvest in the following water volumes:

Wheat, barley, linseed, combining peas and field beans: 80 to 250 litres per hectare

Oilseed rape and mustards: 200 to 250 litres per hectare

200 to 250 litres per hectare is the preferred volume where crop or weeds are dense and good coverage is necessary.

WEED CONTROL IN STUBBLES, BEFORE DRILLING OR PLANTING ANY CROP OR POST DRILLING OR PLANTING ABD BEFORE CROP EMERGENCE

CONDITIONS FOR USE

For Couch control in stubbles, applications made from late September up to mid-November give the best results. In some years, performance can be reduced during this period by insufficient foliage re-growth, and/or reduction of growth activity due to onset of cold conditions e.g. frost before or soon after application.

In Spring, allow at least 3 weeks of weed growth before spraying with TOUCHDOWN QUATTRO. Re-treatment may be necessary pre-harvest or in the autumn to control any further weeds emerging after treatment.

DO NOT CULTIVATE BEFORE SPRAYING. Direct drilling may be used in fields suitable for this technique.

Where using post drilling or planting and pre crop emergence ensure application is complete before ANY crop has emerged.

RATES OF USE

Weeds are controlled by TOUCHDOWN QUATTRO at rates shown. Select the lowest rate which controls all required weeds.

Weed / Use	Rate: litres per hectare	Notes For Use	Latest time of application
Common Couch	3.0 to 4.0#	For best control use the full rate. Rates may be reduced as shown in good growing conditions, and where weed growth stage is suitable#.	5 days before cultivation, drilling or planting of the following crop
Other perennial grasses. Volunteer potatoes (autumn only).	4.0	Ensure plenty of active top growth before treatment, especially for volunteer potatoes.	
Annual broad-leaved weeds. Annual grasses. Volunteer cereals.	1.5	All infestations of all species.	2 days before drilling or planting of the following crop, or 24 hours after cultivating
# See 'Optimum Control Of Weeds'			

APPLICATION

Water volume: **80-250 litres per hectare**

200-250 litres per hectare is the preferred volume where crop or weeds are dense and good coverage is necessary.

GRASSLAND DESTRUCTION CROPS

Do not use on grassland if the crop is to be used for animal food or bedding. Exclude stock from treated fields. Livestock may not graze or be fed the treated forage, nor may it be used for silage or bedding. After grazing or cutting, allow a re-growth period varying from 3 to 6 weeks before spraying with TOUCHDOWN QUATTRO:

Short rotation grasses and annual broad-leaved species:

Treat at any time of year when growth is active, grass plants have at least 5 cm of new leaf growth and annual broad-leaved weeds have at least 2 true leaves.

Perennial grasses in 2-4 year old leys:

Treat when rhizome, stolon or tiller growth is active and grass plants have at least 5 leaves with 10 to 15 cm of new leaf growth. The listed perennial broad-leaved weeds will often be susceptible at times when perennial grasses are suitable for treatment.

Perennial broad-leaved weeds in long leys:

Treat when these weeds have produced a flowering stem which is up to the stage of flowering but before seeds are set. The period of treatment can range from early June to late August and is influenced by location, climate and sward management.

Well established perennial weeds in permanent pastures:

These pastures may contain many fine-leaved grasses and many broad-leaved weeds. Take care to identify the species present and spray only at their sensitive stage of growth.

CONDITIONS OF USE

Allow at least 14 days after spraying perennial grasses and weeds, after which normal cultivations for the next crop can be made as usual. Alternatively, there are two situations where grass may be direct drilled:

- a) Following a 1-2 year old ley - without mat.

It is essential to remove or destroy all surface trash once desiccation is complete. Grass and clover may be direct drilled once all trash is cleared.

- b) Following a long ley - with some surface mat.

Spray the ley in the autumn. Delay direct drilling until the following spring to give the surface mat time to decompose. Destruction of any remaining trash, followed by harrowing to break the soil surface to the depth of decaying roots and rhizomes, will aerate the soil, speed breakdown of the organic mat and reduce the risk of toxins being present when grass seeds are drilled in the spring.

RATES OF USE

Weeds are controlled by TOUCHDOWN QUATTRO at rates marked 'S'. Select the lowest rate which controls all required weeds, and will destroy all grass species present in the sward. Well established swards and permanent pasture will need higher doses.

Grass Weeds and Rushes	Rate: litres per hectare			
	3.0	4.0	5.0	6.0
Annual Meadow grass	S	S	S	S
Barren Brome	S	S	S	S
Black Bent		S	S	S
Black-grass	S	S	S	S
Cock's-foot		S	S	S
Common Bent		S	S	S
Common Couch		S	S	S
Common Reed			S	S
Creeping Bent		S	S	S
Creeping Soft-grass		S	S	S
Crested Dog's-tail		S	S	S

False Oat-grass		S	S	S
Hard Rush				S
Italian Rye-grass	S	S	S	S
Meadow Fescue		S	S	S
Meadow Foxtail			S	S
Perennial Rye grass		S	S	S
Red Fescue				S
Rough Stalked Meadow-grass	S	S	S	S
Sedges			S	S
Sheep's Fescue				S
Smooth Meadow-grass	S	S	S	S
Soft Brome		S	S	S
Soft Rush			S	S
Timothy		S	S	S
Tufted Hairgrass			S	S
Wild Oats	S	S	S	S
Yorkshire Fog		S	S	S

Broad-leaved Weeds and Bracken	Rate: litres per hectare			
	3.0	4.0	5.0	6.0
Amphibious Bistort				S
Bracken ²			S	S
Broad-leaved Dock		S	S	S
Cleavers	S	S	S	S
Colt's-foot				S
Common Chickweed	S	S	S	S
Common Mouse-ear		S	S	S
Common Nettle			S	S
Common Ragwort				S
Common Sorrel			S	S
Creeping Buttercup ¹			S	S
Creeping Cinquefoil			S	S
Creeping Thistle			S	S
Curled Dock			S	S

Dandelion		S	S	S
Dock seedlings	S	S	S	S
Ground-elder				S
Hogweeds ¹		S	S	S
Japanese Knotweed				S
Mayweed species	S	S	S	S
Meadowsweet				S
Mugwort		S	S	S
Perennial Sow- Thistle			S	S
Plantains		S	S	S
Red Clover			S	S
St John's-worts				S
Scotch Thistle				S
Sheep's Sorrel			S	S
Spear Thistle			S	S
Speedwell species	S	S	S	S
White Clover ¹				S
White Dead-nettle			S	S
Willowherbs		S	S	S
Yarrow			S	S

¹Correct stage of growth at treatment is important.

²At full frond expansion.

APPLICATION

Water volume: **150-250 litres per hectare**

200-250 litres per hectare is the preferred volume where crop or weeds are dense and good coverage is necessary.

GREEN COVER ON LAND TEMPORARILY REMOVED FROM PRODUCTION, AND LAND NOT INTENDED TO BEAR VEGETATION

When TOUCHDOWN QUATTRO is to be applied to land taken out of production as part of a grant aided scheme, users must ensure that use complies with the management rules of that scheme. TOUCHDOWN QUATTRO can also be used for vegetation control in a variety of other non-cropped areas, such as:

Creation of sterile strips around field margins.

Along roads, paths, fences and ditch edges.

Around buildings and in yards, storage areas and waste ground.

Root-crop storage areas - including re-growth of roots/tubers which will not be consumed.

DO NOT USE in hedgerows, or allow drift into hedgerows.

DO NOT USE in covered areas such as glass houses or under polythene.

Exclude stock from treated fields. Livestock may not graze or be fed the treated forage, nor may it be used for hay, silage or bedding.

Allow 14 days after spraying before cultivating, drilling or planting.

Application to hard surfaces: Apply this product carefully. Ensure spraying takes place only when weeds are actively growing (normally March to October) and is confined only to visible weeds including those in the 30 cm swath covering the kerb edge and road gully – do not overspray drains.

RATES OF USE

Weeds are controlled by TOUCHDOWN QUATTRO at rates shown in the previous section on Grassland Destruction. Other weed species should be treated at the rates shown below. Select the lowest rate which controls all required weeds.

Weed	Rate: litres per hectare
Perennial broad-leaved weeds	6.0
Perennial grasses ** and volunteer potatoes	4.0
Annual weeds	1.5

**A reduced dose of 3 litres product/hectare may provide adequate control of couch grass under optimum application conditions.

APPLICATION

Water volume:

80-250 litres per hectare through conventional mounted or knapsack sprayers
or

20-40 litres per hectare through rotary atomisers.

200-250 litres per hectare is the preferred volume where crop or weeds are dense and good coverage is necessary.

PACK SIZE - HECTARAGE TABLE

According to rate, this 20 litre pack will treat the following areas:

Rate of Use	Area Treated
1.5 litres per hectare	13.3 hectares
2 litres per hectare	10.0 hectares
3 litres per hectare	6.66 hectares
4 litres per hectare	5.0 hectares
5 litres per hectare	4.0 hectares
6 litres per hectare	3.33 hectares

COMPATIBILITY

TOUCHDOWN QUATTRO must NOT be tank mixed with pesticides, fertilizers or adjuvants. Such mixtures may lead to reduced weed control.

MIXING AND SPRAYING

CONVENTIONAL HYDRAULIC SPRAYERS

Apply through a well maintained conventional hydraulic sprayer as a MEDIUM or COARSE spray. Ensure that the sprayer is correctly calibrated before use. Do not leave the spray liquid in the sprayer for long periods (i.e. during meals or overnight).

Ensure that the sprayer boom is adjusted in height so that the spray pattern gives good, even cover. When applying pre-harvest, a high clearance boom may be necessary, and a narrow-wheeled tractor with crop dividers and a wide boom sprayer will minimise crop damage.

Mixing: Ensure that the sprayer is clean and correctly set to give an even application at the required volume. Half-fill the spray tank with clean water and start agitation. Shake the container, if less than 20 litre size whereas use mechanical assistance and add the required amount of Touchdown Quattro to the sprayer using a filling device (e.g. induction bowl or closed transfer unit) or by direct addition to the sprayer tank. Where applicable, unscrew and remove the cap covering the 'anti-glug plug'. Pierce with a screw driver. Wash out containers thoroughly, preferably using an integrated pressure rinsing device, or manually rinse three times. Add washings to the sprayer at the time of filling. Top-up the tank with water to the required level.

APPLICATION - SPOT TREATMENT

Knapsack applicators: TOUCHDOWN QUATTRO may be applied through knapsack sprayers. Use 200 ml TOUCHDOWN QUATTRO in 9.8 litres of CLEAN water to make 10 litres of spray liquid. This quantity will cover 500 square metres at a dose rate equivalent to 4.0 litres per hectare, or 330 square metres at a dose rate equivalent to 6.0 litres per hectare. Cover weed leaves evenly, but do not spray to the point of run-off.

If using the anti glug-plug container:

- Fill the knapsack sprayer 1/3 full of water.
- Unscrew and remove the cap covering the 'anti glug-plug'.
- * Pierce with a screw driver.
- Decant the required quantity of 'Touchdown Quattro' into an appropriate measuring container and add to the tank and replace both caps.
- Rinse the measuring device three times with water and add to the tank.
- Add the appropriate amount of adjuvant to the tank and fill to the required level with water.

CDA Applicators: These applicators may be used in non-crop areas only.

When using rotary atomisers the spray droplet spectra produced must be of a minimum Volume Median Diameter (VMD) of 200 microns. Select the correct rate of TOUCHDOWN QUATTRO and make up to desired volume with CLEAN water. Calibrate and operate according to manufacturer's instructions.

AFTER USE

It is essential to clean out thoroughly sprayer tanks, pumps and pipelines between applying this product and other pesticides.

Wash equipment thoroughly immediately after use with a commercial tank cleaner, in accordance with the manufacturer's instructions. Dispose of tank washings safely according to the Code of Practice for using plant protection products.

This product is to be used only in accordance with the recommendations and instructions given on the labels provided with this pack. Use in any other circumstances is entirely at user's risk.

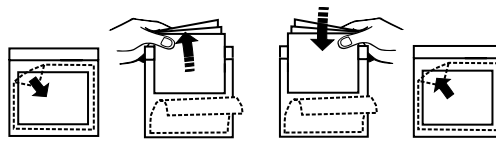
TOUCHDOWN QUATTRO, 'Reglone' trade marks are the property of SYNGENTA Limited.

Syngenta UK Limited,
Jealott's Hill International Research Centre,
Bracknell, Berkshire, RG42 6EY
Tel +44 (0) 1223 883400

To access the Safety Data Sheet for this product, scan QR code:

Alternatively, contact your supplier.





L1132737 GBRI/01D PPE 4225977 1400/2023

TOUCHDOWN QUATTRO®

An aqueous concentrate containing 360 g/l glyphosate.

Toxic to aquatic life with long lasting effects.

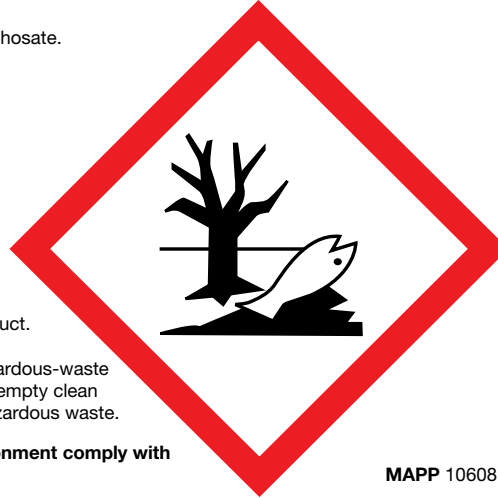
Keep out of reach of children.

Do not eat, drink or smoke when using this product.

Collect spillage.

Dispose of contents/container to a licensed hazardous-waste disposal contractor or collection site except for empty clean containers which can be disposed of as non-hazardous waste.

To avoid risks to human health and the environment comply with the instructions for use.



MAPP 10608

IMPORTANT INFORMATION

FOR USE ONLY AS AN AGRICULTURAL / HORTICULTURAL / INDUSTRIAL HERBICIDE

For use on:

Crops/situations	Maximum individual dose (litres product/ha)	Maximum total dose (litres/ product/ha)	Latest time of application
Barley, wheat	4.0	4	7 days before harvest
Oilseed rape and linseed	4.0	4	14 days before harvest
Mustard	4.0	4	8 days before harvest
Wheat, barley, oilseed rape, mustard, linseed, combining peas, vining peas, field beans, bulb onions, durum wheat, leek, oats, potato, salad onions, sugar beet, swede, turnip, asparagus	1.5	1.5	Pre emergence (ensure spraying precedes ANY crop emergence)
All edible crops (before planting), all edible crops (stubble), all non-edible crops (before planting), all non-edible crops (stubble)	4.0	4	5 days before cultivation, drilling or planting of the following crop
	1.5	1.5	OR 2 days before drilling or planting of the following crop or 24 hours before cultivating
Combining peas and field bean	3.0	3	7 days before harvest
Green cover on land not being used for crop production	6.0	6	5 days before cultivation, drilling or planting of the following crop
Grassland (destruction), hard surfaces, natural surfaces not intended to bear vegetation, permeable surfaces overlying soil	6.0	-	-

***Other specific restrictions:** Livestock must be kept out of treated areas until poisonous weeds such as ragwort have died and become unpalatable. For use on handheld rotary atomiser, the spray droplet spectra must be a minimum Volume Median Diameter (VDM) of 200 microns. The product must not be used on grassland if the crop is to be used as animal feed or bedding.

READ THE LABEL BEFORE USE. USING THIS PRODUCT IN A MANNER THAT IS INCONSISTENT WITH THE LABEL MAY BE AN OFFENCE. FOLLOW THE CODE OF PRACTICE FOR USING PLANT PROTECTION PRODUCTS.