



# Apron<sup>®</sup> XL



**GROUP 4 FUNGICIDE**



**Product registration number:** MAPP 21027  
**UFI:** Q21D-K5M0-Y006-HPEP

An Emulsion for seed treatment containing 339.2 g/l metalaxyl-M.

APRON XL is for use on seeds to be sown under permanent protection with full enclosure and controls *Pythium* in spinach, white cabbage, red cabbage, savoy cabbage, oxheart cabbage, cauliflower, broccoli, Brussels sprouts, kohlrabi, Chinese cabbage and onions.

## SAFETY PRECAUTIONS

### a) Operator protection

Engineering control of operator exposure must be used where reasonably practicable in addition to the following personal protective equipment:

WEAR SUITABLE PROTECTIVE CLOTHING (COVERALLS), SUITABLE PROTECTIVE GLOVES AND FACE PROTECTION (FACESHIELD) when handling the concentrate, contaminated surfaces or handling treated seed.

WEAR SUITABLE PROTECTIVE CLOTHING (COVERALLS)\*, SUITABLE PROTECTIVE GLOVES AND FACE PROTECTION (FACESHIELD) when cleaning machinery.

\*With liquid tight connections for the whole body to at least EN 14605 Type 3 or equivalent.

However engineering controls may replace personal protective equipment if a COSHH assessment shows they provide an equal or higher standard of protection

WASH ALL PROTECTIVE CLOTHING thoroughly after use, especially the insides of gloves.

WASH HANDS AND EXPOSED SKIN before meals and after work

### b) Environmental protection

DO NOT CONTAMINATE WATER WITH THE PRODUCT OR ITS CONTAINER.

DO NOT CLEAN APPLICATION EQUIPMENT NEAR SURFACE WATER.

AVOID CONTAMINATION VIA DRAINS FROM FARMYARDS AND ROADS.

TREATED SEED MUST NOT BE USED as food or feed

### c) Storage and disposal

EMPTY CONTAINER COMPLETELY and dispose of safely  
KEEP IN ORIGINAL CONTAINER tightly closed in a safe place  
DO NOT RE-USE CONTAINER FOR ANY PURPOSE  
DO NOT RE-USE SACKS OR CONTAINERS THAT HAVE CONTAINED TREATED SEED for food or feed  
LABEL TREATED SEED with the appropriate precautions using printed sacks, labels or bag tags supplied

**In case of toxic or transport emergency ring +44 (0)1484 538444 any time**

*The (COSHH) Control of Substances Hazardous to Health Regulations may apply to the use of this product at work.*

Syngenta UK Limited  
Jealott's Hill International Research Centre,  
Bracknell, Berkshire, RG42 6EY  
Tel +44 (0) 1223 883400

**PROTECT FROM FROST**  
**STORE IN A COOL DRY PLACE**

© Syngenta AG, 2025

This product label is compliant with the  
CPA Voluntary Initiative (VI) guidance



L1132309 GBRI/01D PPE 4225442

# 20 litres

Product names marked ® or ™, the ALLIANCE FRAME ™, the SYNGENTA Logo and the PURPOSE ICON ™ are Trademarks of a Syngenta Group Company

**APRON® XL**

An emulsion for seed treatment containing 339.2 g/l metalaxyl-M.

**Warning**

**Harmful if swallowed.**

**Causes serious eye irritation.**

**Harmful to aquatic life with long lasting effects.**

Wash skin thoroughly after handling.

Do not eat, drink or smoke when using this product.

Wear eye protection/face protection.

IF SWALLOWED: Call a POISON CENTRE or doctor/physician if you feel unwell.

IF IN EYES: Rinse cautiously with water for several minutes. Remove contact lenses if present and easy to do - continue rinsing.

If eye irritation persists: Get medical advice/attention.

Dispose of contents/container to a licensed hazardous-waste disposal contractor or collection site except for empty clean containers which can be disposed of as non-hazardous waste.

Contains 1, 2-benzisothiazol-3-one. May produce an allergic reaction.

**To avoid risks to human health and the environment, comply with the instructions for use.**

**MAPP: 21027 UFI: Q21D-K5M0-Y006-HPEP**

**IMPORTANT INFORMATION**

FOR USE ONLY AS AN AGRICULTURAL SEED TREATMENT

For use on	Maximum Individual Dose	Maximum Number of Treatments	Latest Time of application
Spinach (seed), cabbage (seed), cauliflower (seed), broccoli/calabrese (seed), Brussels sprouts (seed), kohlrabi (seed), and bulb onion (seed)	0.5 ml/kg seed	One per batch	Pre-drilling

**Other Specific Restrictions:**

Treatment and sowing crops of broccoli/calabrese , Brussels sprout, cabbage, cauliflower, Chinese cabbage and spinach must only be made under 'permanent protection' situations which provide full enclosure (including continuous top and side barriers down to below ground level) and which are present and maintained over a number of years.

Treatment sowing and transplanting crops of onion and kohlrabi must only be made under 'permanent protection' situations which provide full enclosure (including continuous top and side barriers down to below ground level) and which are present and maintained over a number of years.

A minimum period of 21 days must be observed between sowing Broccoli/calabrese , Brussels sprout, cabbage, cauliflower, Chinese cabbage and spinach seeds and transplanting plants outdoors.

Onion and kohlrabi must be sown and grown under permanent protection with full enclosure.

Reasonable precautions must be taken to prevent access of birds and wild mammals to treated seeds of Broccoli/calabrese, Brussels sprout, cabbage , cauliflower, oriental cabbages, spinach.

Reasonable precautions must be taken to prevent access of birds and wild mammals to treated seeds and crops of onion and kohlrabi.

**READ THE LABEL BEFORE USE. USING THIS PRODUCT IN A MANNER THAT IS INCONSISTENT WITH THE LABEL MAY BE AN OFFENCE. FOLLOW THE CODE OF PRACTISE FOR USING PLANT PROTECTION PRODUCTS.**

This leaflet is part of the approved Product Label.

## **DIRECTIONS FOR USE**

IMPORTANT: This information is approved as part of the Product Label. All instructions within this section must be carefully read in order to obtain safe and successful use of this product.

## **DISEASES CONTROLLED**

APRON XL is an emulsion formulation for seed treatment containing 339.2 g/l metalaxyl-M. The product is intended for use as a seed treatment for protection against infestation of *Pythium* spp in a range of vegetable crops.

## **CROP SPECIFIC INFORMATION**

### **Crops**

Seeds treated with Apron XL must only be sown under 'permanent protection' situations which provide full enclosure (including continuous top and side barriers down to below ground level) and which are present and maintained over a number of years.

### Spinach

For the control of *Pythium* spp. Limited data indicates that in spinach activity against *Pythium* spp can be variable depending on the composition of the population.

Dose rate: 0.5 ml APRON XL per kg of seed.

### Cabbage Seed (White cabbage, red cabbage, savoy cabbage, oxheart cabbage, Chinese cabbage), cauliflower, broccoli/calabrese, Brussels sprouts, kohlrabi and onions

For the control of *Pythium* spp.

Dose Rate: 0.5 ml APRON XL per kg seed

### **Timing**

Before drilling

## **MIXING AND APPLICATION**

APRON XL should be applied through continuous flow or batch seed treaters. Adequate seed coverage should be obtained if APRON XL is added during the mixing of the seeds. Calibration of the dose rates needs to be done before use. The method depends on the equipment used. Consult the manual for the machine or seek further advice from Syngenta. The treatment equipment used should be a closed system in order to minimise the risk of contact with the product. Safety precautions should be followed throughout.

APRON XL is usually applied during the process of pelleting vegetable seeds. Pelleting requires specialist equipment. If necessary Syngenta UK Limited can be consulted for advice on application during the pelleting process.

### **Mixing Procedure**

1. Calculate the quantity of seeds to be treated.
2. Calculate the dose rate of product to be applied

3. Prepare the mixture. It is normal to use a mixture of 50% water to 50% product but this also depends on the application machinery being used. A dilution rate of four parts water to one of product is usually the maximum dilution rate used.
4. Ensure that there is good agitation to keep the product evenly suspended.
5. Ensure that the application equipment is properly calibrated for the seed to be treated.
6. Apply the product. Do not leave the mixed slurry for any period without agitation.

### **Storage after Treatment**

Sowing treated seed that has been stored for prolonged periods (beyond the season of treatment) may adversely affect effectiveness and/or crop safety.

### **Sowing under permanent protection**

Seed treated with Apron XL must only be sown under permanent protection situations which ensure full enclosure (including continuous top and side barriers down to below ground level) and which are present and maintained for a number of years.

A period of 21 days must be observed between sowing the seed and transplanting plants outdoors for Broccoli/calabrese, Brussels sprout, cabbage, cauliflower, Chinese cabbage and spinach seeds. Onion and kohlrabi must not be transplanted outside.

## **COMPANY ADVISORY INFORMATION**

### **Resistance:**

APRON XL contains a phenylamide fungicide. A number of diseases, including *Pythium* species, have developed resistance to phenylamides. Strains of diseases including “downy mildew” resistant to the phenylamide group of fungicides, which includes metalaxyl-M are known to occur in some regions of the United Kingdom. Where strains of pathogens resistant to metalaxyl-M develop APRON XL may not give satisfactory control of the disease. Where there is a known resistance problem with metalaxyl-M growers should seek other methods of disease control.

While fungicides such as metalaxyl-M are an important tool for minimising the effect of pathogens on crops growers should always seek to combine fungicidal seed treatment with appropriate cultural methods for reducing diseases. Clean healthy seed should be used, and where possible, varieties should be selected which offer resistance or tolerance of commercially important pathogens. Use of these techniques should also be supported by optimising the growing conditions for the crop so as to minimise the impact of pathogens on the health of the crop.

Contact your APRON XL distributor or Syngenta UK Limited if you believe you have a problem.

## **SEED BAG LABEL**

This seed has been treated with APRON XL (MAPP 21027)

Contains metalaxyl-M and protects against *Pythium* spp. in a range of vegetable seed crops.

Seeds treated with Apron XL must only be sown under 'permanent protection' situations which provide full enclosure (including continuous top and side barriers down to below ground level) and which are present and maintained over a number of years.

## **SAFETY PRECAUTIONS**

WEAR SUITABLE PROTECTIVE CLOTHING (COVERALLS), SUITABLE PROTECTIVE GLOVES AND FACE PROTECTION (FACESHIELD) when handling treated seed.

THIS SEED HAS BEEN CHEMICALLY TREATED

Treated seed should be precision drilled

DO NOT HANDLE seed unnecessarily

DO NOT USE TREATED SEED as food or feed

DO NOT RE-USE SACKS THAT HAVE CONTAINED TREATED SEED for food or feed

KEEP TREATED SEED SECURE from people, domestic stock / pets and wildlife at all times during storage and use

WASH HANDS AND EXPOSED SKIN before meals and after work

## **Other Specific Restrictions:**

Treatment and sowing crops of broccoli/calabrese , Brussels sprout, cabbage, cauliflower, Chinese cabbage and spinach must only be made under 'permanent protection' situations which provide full enclosure (including continuous top and side barriers down to below ground level) and which are present and maintained over a number of years.

Treatment sowing and transplanting crops of onion and kohlrabi must only be made under 'permanent protection' situations which provide full enclosure (including continuous top and side barriers down to below ground level) and which are present and maintained over a number of years.

A minimum period of 21 days must be observed between sowing Broccoli/calabrese , Brussels sprout, cabbage, cauliflower, Chinese cabbage and spinach seeds and transplanting plants outdoors.

Onion and kohlrabi must be sown and grown under permanent protection with full enclosure.

Reasonable precautions must be taken to prevent access of birds and wild mammals to treated seeds of Broccoli/calabrese, Brussels sprout, cabbage , cauliflower, oriental cabbages, spinach.

Reasonable precautions must be taken to prevent access of birds and wild mammals to treated seeds and crops of onion and kohlrabi.

Syngenta UK Ltd

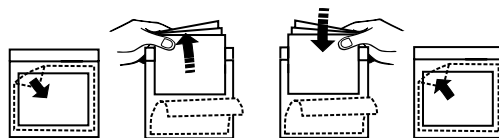
Syngenta, Jealott's Hill International Research Centre, Bracknell, Berkshire, RG42 6EY, United Kingdom,

Tel: (01223) 883400

To access the Safety Data Sheet for this product, scan QR code:

Alternatively, contact your supplier.





L1132308 GBRI/01D PPE 4225441 1722/2024

**APRON® XL**

An emulsion for seed treatment containing 339.2 g/l metalaxyl-M.

**Warning**

**Harmful if swallowed.**

**Causes serious eye irritation.**

**Harmful to aquatic life with long lasting effects.**

Wash skin thoroughly after handling.

Do not eat, drink or smoke when using this product.

Wear eye protection/face protection.

IF SWALLOWED: Call a POISON CENTRE or doctor/physician if you feel unwell.

IF IN EYES: Rinse cautiously with water for several minutes. Remove contact lenses if present and easy to do - continue rinsing.

If eye irritation persists: Get medical advice/attention.

Dispose of contents/container to a licensed hazardous-waste disposal contractor or collection site except for empty clean containers which can be disposed of as non-hazardous waste.

Contains 1, 2-benzisothiazol-3-one. May produce an allergic reaction.

**To avoid risks to human health and the environment, comply with the instructions for use.**

**MAPP:** 21027 **UFI:** Q21D-K5M0-Y006-HPEP



**IMPORTANT INFORMATION**

FOR USE ONLY AS AN AGRICULTURAL SEED TREATMENT

For use on	Maximum Individual Dose	Maximum Number of Treatments	Latest Time of application
Spinach (seed), cabbage (seed), cauliflower (seed), broccoli/calabrese (seed), Brussels sprouts (seed), kohlrabi (seed), and bulb onion (seed)	0.5 ml/kg seed	One per batch	Pre-drilling

**Other Specific Restrictions:**

Treatment and sowing crops of broccoli/calabrese , Brussels sprout, cabbage, cauliflower, Chinese cabbage and spinach must only be made under 'permanent protection' situations which provide full enclosure (including continuous top and side barriers down to below ground level) and which are present and maintained over a number of years.

Treatment sowing and transplanting crops of onion and kohlrabi must only be made under 'permanent protection' situations which provide full enclosure (including continuous top and side barriers down to below ground level) and which are present and maintained over a number of years.

A minimum period of 21 days must be observed between sowing Broccoli/calabrese , Brussels sprout, cabbage, cauliflower, Chinese cabbage and spinach seeds and transplanting plants outdoors.

Onion and kohlrabi must be sown and grown under permanent protection with full enclosure.

Reasonable precautions must be taken to prevent access of birds and wild mammals to treated seeds of Broccoli/calabrese, Brussels sprout, cabbage , cauliflower, oriental cabbages, spinach.

Reasonable precautions must be taken to prevent access of birds and wild mammals to treated seeds and crops of onion and kohlrabi.

**READ THE LABEL BEFORE USE. USING THIS PRODUCT IN A MANNER THAT IS INCONSISTENT WITH THE LABEL MAY BE AN OFFENCE. FOLLOW THE CODE OF PRACTISE FOR USING PLANT PROTECTION PRODUCTS.**