

Powered by
Syngenta Vegetable Seeds

DISCOVER OUR VEGETABLE VARIETIES



syngenta®



Contents

| | |
|---------------------|---|
| Introduction | 4 |
| Meet the Team | 5 |
| Clubroot Solutions | 6 |
| FarMore® Technology | 9 |

Discover our Varieties

| | |
|------------------------|----|
| Broccoli | 10 |
| Brussels Sprouts | 14 |
| Borecole | 20 |
| Cabbage | 21 |
| Cauliflower | 29 |
| Wholehead Lettuce | 39 |
| Babyleaf | 48 |
| Onions | 57 |
| Squash | 60 |
| Table of Abbreviations | 63 |
| Levels of Resistance | 64 |
| Notes | 66 |

Breeding to Meet the Next Green Revolution

Vegetable crop genetics offer the first step to tackle many of the difficult challenges currently impacting on the profitability of UK growers. Syngenta is at the forefront of delivering varieties developed to meet growers' changing needs.

Your variety selection will have a major influence on business performance at all levels, from practical agronomy decisions, to resolving labour shortages, managing increasing costs, coping with changing climate, creating innovative markets and, ultimately, satisfying the end-consumer.

Now, with the industry's extra focus on delivering a reduction in carbon emissions, variety choice will be crucial in driving towards net zero targets.

For our specialist vegetable and salad crop variety breeders, high yield remains a key objective for any new development. However, greater focus on the traits for efficiency of production and marketability could lead to improved overall profitability and business sustainability.

Working with our dedicated UK field team to tailor variety characteristics best suited to a farm's individual situation can deliver better returns for the current season and justify investment in your business for the future.

Making more efficient use of every input will be crucial for lowering costs and reducing environmental impacts of production. With escalating fertiliser costs, for example, varieties available now that perform well – or in some cases better – under a low-nutrition regime offer real benefits. Drought and heat tolerance will be essential variety attributes to make more effective use of water resources in the future.

Breeding varieties with the resilience to cope with climate extremes better assures consistent and predictable production for you and your customers. Syngenta's pan-European and global reach gives access to vegetable crop

genetics and experience that will be invaluable for UK growers to adapt.

Today's Syngenta variety selection could enable UK growers to supply an extended season of home-grown produce in demand from customers – reducing costs, challenges and carbon footprint of long-distance transport.

With labour availability now a major issue for growers across Europe, which has been amplified in the UK since Brexit, means mechanical harvesting and processing requires significant investment from growers. Varieties bred with the robustness and uniformity to suit mechanical harvesting systems are essential for the exciting technology to be effectively utilised and to justify the investment.

Furthermore, Syngenta's development of vegetable and salad varieties that require less trimming and processing helps to save time and cost on packing lines, as well as reducing waste right through to the retail shelf and enhanced end-consumer satisfaction.

For the future, varieties that will perform consistently well in Integrated Pest Management (IPM) systems will become increasingly important. Interpreting responses to biological, biopesticide and biostimulant inputs is only possible through extensive trials and specialist understanding of plants' genetic potential.

The continued ability of UK vegetable and salad growers to adapt to new challenges is ever more important. Syngenta seed breeders and our UK field teams are committed to developing and supporting the exciting and innovative varieties highlighted in this catalogue, that will meet your needs now and in the future.

Meet the Team



Kris Goen
Seeds Commercial Manager
UKI & Nordics
T: +32 498.85.80.63
E: kris.goen@syngenta.com



Nigel Kingston
Technical Sales Representative
(Onion, Broccoli and Cabbage)
T: 07711 655526
E: nigel.kingston@syngenta.com



Harry Twinberrow
Technical Sales Representative
(Brussels Sprouts and Kale)
T: 07385 466591
E: harry.twinberrow@syngenta.com



Louis Stokes
Technical Sales Representative
(Cauliflower)
T: 07776 994697
E: louis.stokes@syngenta.com



Rosie Frost
Technical Sales Representative
(Leafy crops, Courgette and Pumpkin)
T: 07776 997416
E: rosemary.frost@syngenta.com



Luke Duffy
Junior Breeding Trials Specialist
(Leafy)
T: 07484 926799
E: luke.duffy@syngenta.com



Sue Hutchinson
Marketing Operations Lead
T: 07484 908946
E: susan.hutchinson@syngenta.com



Henrik Pedersen
Technical Sales Representative –
Nordics
T: +45 20151763
E: henrik.pedersen@syngenta.com



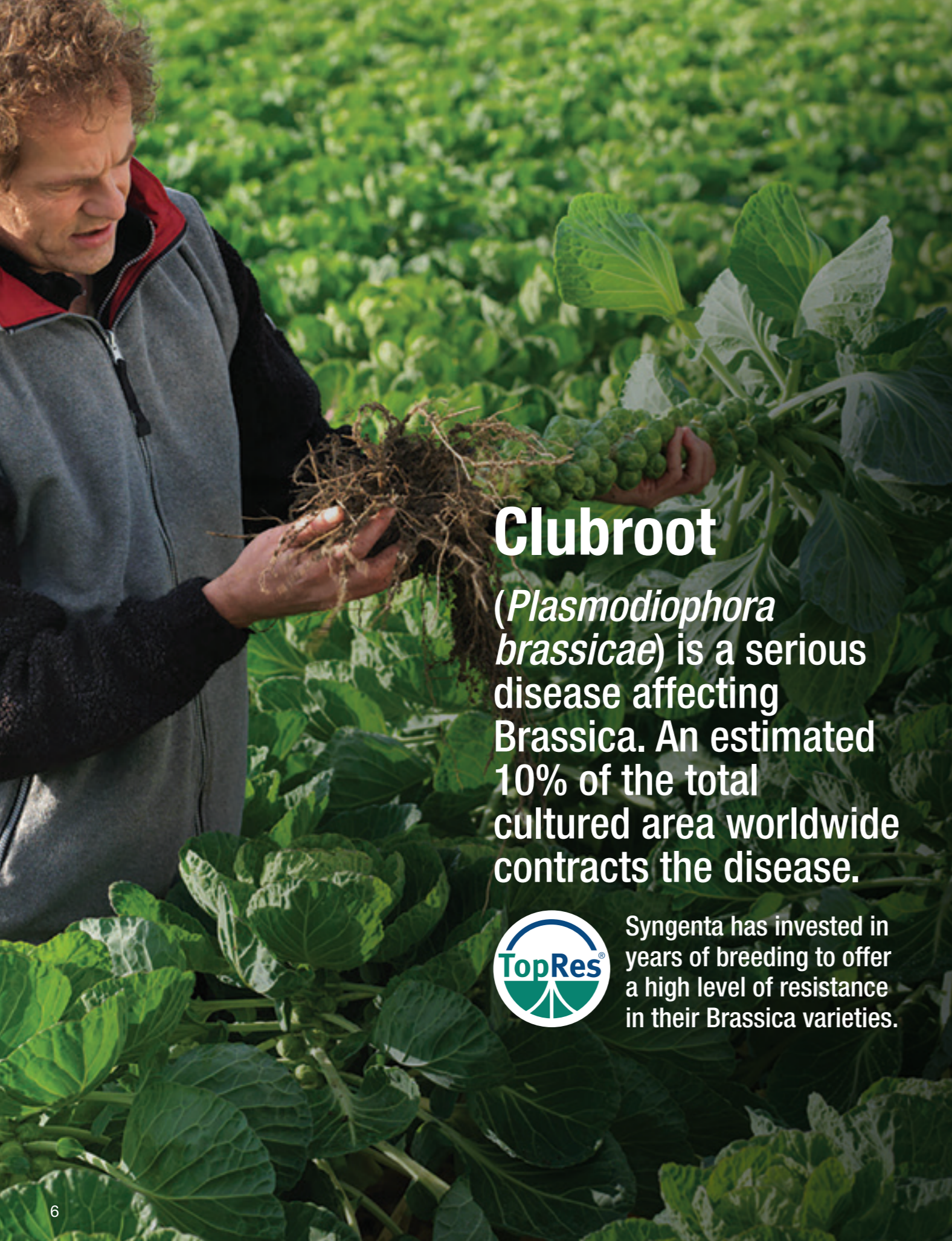
Sanna Hasila
Technical Sales Representative –
Nordics
T: +35 8400 285 783
E: sanna.hasila@syngenta.com



Rebecca White
Vegetable Business Manager
(Crop Protection)
T: 07894 392984
E: rebecca.white@syngenta.com



Customer Services
T: 0845 2660014
T: +31 (0) 228 366 306
E: VegetablesCSDesk.UK@syngenta.com



Clubroot
(Plasmodiophora brassicae) is a serious disease affecting Brassica. An estimated 10% of the total cultured area worldwide contracts the disease.



Syngenta has invested in years of breeding to offer a high level of resistance in their Brassica varieties.

Syngenta has pioneered robust and reliable clubroot resistance in a range of key brassica varieties since 2005



Clubroot symptoms

Clubroot is a soil-borne fungal disease which attacks the roots of Brassica crops. It is considered as one of the most economically important diseases of cultivated crucifers. Roots affected by clubroot are swollen and distorted. The damage caused to the roots causes crops to be stunted and, in most cases, there is a reduction in yield. The pathogen survives in the soil for up to 15 years in the form of resting spores released from decayed galls.



Syngenta's solutions

The potential of cultural practices to reduce crop losses due to clubroot are limited and chemical treatments to control the fungus are either banned, due to environmental regulations, or are not cost-effective. The best way to combat clubroot is through the breeding of resistant varieties. Syngenta has succeeded, after many years of breeding, to introduce a high level of resistance in varieties of cabbage (Chinese, White & Green), Brussels sprouts, broccoli and cauliflower. Syngenta will, over the coming years, be introducing the resistance across the Brassica range.

We currently have the following varieties with clubroot resistance:

| BROCCOLI | BRUSSELS SPROUTS | SAVOY CABBAGE | WHITE CABBAGE | CAULIFLOWER |
|--------------------------------|------------------|----------------------------|---------------|-------------|
| MONCLANO | CRISPUS | CORDESA | KILASTOR | CLAPTON |
| NPI <small>COMING SOON</small> | CRYPTUS | CORDOBA | KILAZOL | CLARIFY |
| | | <small>NEW</small> CORRIPA | KILACEES | CLARINA |
| | | <small>NEW</small> CORADI | | CLEOZIL |

LOSSES FROM CLUBROOT

Growing cost per ha

£3,960*

+ loss of income per ha

£5,720

*Excludes rent.
Source: John Nix 2022



Syngenta continues to develop a new generation of clubroot resistant varieties providing protection against an even wider range of clubroot strains.

Clubroot resistant varieties reduce the risk of plant loss and enable growers to manage cropping areas with known levels of infection.



What is FARMORE® Technology?

FarMore® Technology is the first comprehensive combination of **separately-registered seed protection products, proprietary application technologies and dedicated seed treatment services** that maximise vegetable production value by enhancing performance and quality.



What is APRON® XL and what does it do?

APRON XL is a modern systemic seed treatment fungicide. APRON XL is specially developed for seed treatment and contains 35% mefenoxam, the biologically most active isomer of the compound metalaxyl.

APRON XL controls seed and soil-borne fungi and downy mildew. The product is quickly absorbed by the seed and spreads through the plant after germination. This protects the seed and the seedling at an early stage, resulting in a fast development and a uniform crop. APRON XL is effective in damp, colder conditions that are ideal for *Pythium*, and warmer, humid conditions ideal for *Phytophthora* and downy mildew. APRON XL is registered in a wide range of vegetable crops.



What is MAXIM® 480FS and what does it do?

MAXIM 480FS is a special seed treatment that is effective against a broad spectrum of seed and soil-borne diseases in a wide range of vegetable crops. Active ingredient fludioxonil is a contact fungicide that penetrates the seed surface and coats the seed, providing long-lasting protection around the young seedling and combating diseases such as *Alternaria*, *Phoma* and *Fusarium*. It has excellent activity at low rates, has a positive effect on germination capacity and plant vigour, and is suitable as a mixing partner with other seed treatments.



DISCOVER OUR WHOLEHEAD LETTUCE VARIETIES

“The crops I cover are lettuce and spinach. I really enjoy working in these crops because they are dynamic and fast changing. We have a fantastic range of leafy varieties to suit different segments and growing conditions.”



MEET THE EXPERT

Rosie Frost
Technical Sales Representative
(Leafy crops, Courgette and
Pumpkin)

T: 07776 997416
E: rosemary.frost@syngenta.com

Our Iceberg Lettuce Varieties



LS15542

Ice Circle

Fast growing variety with full *Bremia* resistance

- Excellent shape
- Full resistance
- Flat midribs
- Fresh and processing
- Very well organised base throughout the season
- Quick filling head which doesn't become over dense
- Uniform head shape and concentrated maturity for highest harvesting rates

SUMMARY

| Segment | Resistances |
|---------------|--|
| Iceberg | Bl: 16-37EU / Nr: 0 / Fol: 4 / TBSV (HR) |
| Harvest | |
| Spring/Autumn | |



LICN10-0106

Ice Electro

Summer variety for retail or processing

- High quality summer variety
- Works flexibly on a range of different soils
- Excellent base shape
- Easy to harvest

SUMMARY

| Segment | Resistances |
|---------|--|
| Iceberg | Bl: 16-37EU / Nr: 0 / Fol: 4 / TBSV (HR) |
| Harvest | |
| Summer | |



LS17504

Ice Jazz

Brand new, very uniform variety for spring and autumn

- Medium size variety for autumn
- Very uniform maturity for highest cropping rates
- Perfect base quality with robust, flat ribs in autumn
- Good head shape
- Attractive filling – med/fast
- Excellent wrapper leaf under stressful conditions

SUMMARY

| Segment | Resistances |
|---------|------------------------------|
| Iceberg | Bl: 16-37EU / Nr: 0 / Fol: 4 |
| Harvest | |
| Autumn | |



Ice Music

Flexible variety for main season

- Adaptable variety in different growing conditions
- Mainly for summer but can be grown in the spring and autumn too
- Easy and fast to harvest
- Smooth base

SUMMARY

| Segment | Resistances |
|---------|--|
| Iceberg | Bl: 16-37EU / Nr: 0 / Fol: 4 / TBSV (HR) |

Harvest

Spring/Summer and Autumn



LS17510 Ice Party

Larger framed dual purpose variety

- Long harvest window
- Easy to harvest and pack
- Slight flat round head shape
- Slower filling variety but still good early yield
- Reliable head formation
- Tight wrapper leaf
- Robust variety for spring and autumn
- Very good base quality with tight filled ribs

SUMMARY

| Segment | Resistances |
|---------|--|
| Iceberg | Bl: 16-37EU / Nr: 0 / Fol: 4 / TBSV (HR) |

Harvest

Spring/Autumn



LICN19-0071 Ice Pop

Slow growing retail size summer variety

- Very high uniformity of the crop for high harvesting rates
- Keeps excellent shape even under stressful conditions
- Very strong on tipburn and bolting tolerance

SUMMARY

| Segment | Resistances |
|---------|--|
| Iceberg | Bl: 16-37EU / Nr: 0 / Fol: 4 / TBSV (HR) |

Harvest

Spring/Autumn



Our Cos Lettuce Varieties



Actina

25 cm Romaine with high resistances. Strong against tipburn and twisting

- Reliable medium-framed variety
- Outstanding tolerance to tipburn
- Dual purpose variety suitable for both retail and processing
- Upright and well-filled heart
- Excellent shape and earliness in spring crops

SUMMARY

| Segment | Resistances |
|---------------|--|
| Romaine | Bl: 16-28, 30-32, 37EU / Nr: 0 / Fol: 1, 4 |
| Harvest | |
| Summer/Autumn | |



NEW

Decina

Actina candidate with full *bremia* resistance package for UK & Spain

- Romaine for all season in Actina type with full *bremia*-package
- Improvement to Actina in bolting
- Easy and fast to harvest
- Strong against tipburn
- Very nice torpedo shaped heads
- Long harvest window

SUMMARY

| Segment | Resistances |
|----------------------|--|
| Romaine | Bl: 16-37EU / Nr: 0 / Fol: 1 / TBSV (HR) |
| Harvest | |
| Spring/Summer/Autumn | |



Typical

Perfect complement for Actina in a programme

- Very strong on bolting
- Taller than Actina
- Excellent shape
- Performed consistently well on different soils
- Romaine for whole season
- Strong against twisting
- Darker and more blistered leaf than Actina

SUMMARY

| Segment | Resistances |
|----------------------|--|
| Romaine | Bl: 16-37EU / Nr: 0 / Fol: 1 / TBSV (HR) |
| Harvest | |
| Spring/Summer/Autumn | |



NEW

Yakina

Torpedo shaped Romaine with Bl 16-37 downy mildew resistance

- Excellent tipburn tolerance
- Easy to harvest
- Similar growth speed to Actina
- Excellent shape for packing

SUMMARY

| Segment | Resistances |
|----------------------|--|
| Romaine | Bl: 16-37EU / Nr: 0 / Fol: 1 / TBSV (HR) |
| Harvest | |
| Spring/Summer/Autumn | |

Our Mini Cos and Mini Cosberg Varieties



NEW

MiniBerg™

LRMN19-1956
Greenspy

Fantastic new Mini Cosberg with excellent holding ability

- Sweet taste
- Thick crunchy leaves
- Oval shaped
- Easy to harvest
- Uniform

SUMMARY

| Segment | Resistances |
|----------------------|---------------------|
| Mini Cosberg | Bl: 16-37EU / Nr: 0 |
| Harvest | |
| Spring/Summer/Autumn | |



LS18823
Tamago

Slender Mini Cos for all season

- Very upright growth habit
- Flat ribs and well closed base
- Narrow leaves – easy to prepare
- Slender Mini Cos for all season production
- Very high bolting tolerance
- Avg. height 18 cm

SUMMARY

| Segment | Resistances |
|----------------------|---|
| Mini Cos | Bl: 16-20, 22-25, 28-30, 33-37EU / Nr: 0 / Fol: 1 / TBSV (HR) |
| Harvest | |
| Spring/Summer/Autumn | |



Our Little Gem Lettuce Varieties



LS16811

Henros

New easy peel Gem for all season

- Little Gem for all year round production
- Consistent on various soil types
- Good shape under all conditions
- Easy to harvest

SUMMARY

| Segment | Resistances |
|---------|----------------------------|
| Gem | Bl: 16-28, 30-32EU / Nr: 0 |



LS15806

Hydros

Throughout the season Gem

- Strong against bolting
- Attractive yellow internal filling
- Full mildew resistances
- Strong tipburn tolerance
- Good shape and good size for packing in all conditions
- Long harvest window – can stay in the field

SUMMARY

| Segment | Resistances |
|---------|-----------------|
| Gem | Bl: 16-35, 37EU |



LRMN20-2016

Phelago

Sweet gem with excellent shape and bolting tolerance

- Excellent base quality
- High bolting tolerance
- Long standing ability
- Robust and reliable

SUMMARY

| Segment | Resistances |
|-----------|---|
| Sweet Gem | Bl: 16-37EU / Nr: 0 / TBSV (HR) / LMV: 1 (IR) |

Harvest

Spring/Summer/Autumn



Our Speciality Lettuce Varieties



LS18468

Canagio

Green Bellagio butterhead

- Full *bremia* resistance
- Large number of leaves per head
- Good colour
- Clean on base

SUMMARY

| Segment | Resistances |
|----------------|---------------------|
| Green Bellagio | Bl: 16-36EU / Nr: 0 |
| Harvest | |
| Spring/Autumn | |



Coriole

Reliable, dark green Batavia

- Suitable for fresh market and processing
- Darker than Parole
- Improved blanching tolerance
- Good head weights

SUMMARY

| Segment | Resistances |
|----------------------|--|
| Green Batavia | Bl: 16-35, 37EU / Nr: 0 / LMV: 1 (IR) |
| Harvest | |
| Spring/Summer/Autumn | |



Dario

Spiky red multi-leaf Apollo

- High yielding red Apollo type
- Spiky leaf texture
- Excellent colour and shine to the leaf

SUMMARY

| Segment | Resistances |
|----------------------|---------------------|
| Bellagio | Bl: 16-37EU / Nr: 0 |
| Harvest | |
| Spring/Summer/Autumn | |

Our Speciality Lettuce Varieties



NEW

 **MiniBerg™**

 **Grewger**

Crispy round leaves perfect for burgers

- Once cored, the leaves fall apart as uniform sized round leaves with a frilly margin
- Interesting innovation in the market
- Heavy heads and thick crispy leaves

SUMMARY

| Segment | Resistances | Harvest |
|----------|-------------------------------|----------------------|
| Bellagio | Bl: 16, 18-21, 23-26, 28-37EU | Spring/Summer/Autumn |



NEW

 **LMULI9-1911**

Compact crispy green Apollo

- High yielding green Apollo
- Spiky leaf texture
- Very thick crispy leaves
- Proven quality in shelf life trials

SUMMARY

| Segment | Resistances | Harvest |
|----------|---|----------------------|
| Bellagio | Bl: 16-37EU / Nr: 0 / TBSV (HR) / LMV: 1 (IR) | Spring/Summer/Autumn |



LS18467
 **Prodigio**

New red incised with excellent colour and improved yield

- Dark cherry red incised Bellagio
- Good colour penetration
- Really high yield potential
- Good 3D-shape of cut leaves
- Strong on bolting in high summer!
- Flexible variety which works on many soil types and in all open field seasons

SUMMARY

| Segment | Resistances | Harvest |
|--------------|---------------------|----------------------|
| Red Bellagio | Bl: 16-37EU / Nr: 0 | Spring/Summer/Autumn |



LS18469
 **Rubagio**

New red Bellagio butterhead

- Full *bremia* resistance
- Large number of leaves per head
- Good colour
- Clean on base

SUMMARY

| Segment | Resistances | Harvest |
|--------------|---------------------|----------------------|
| Red Bellagio | Bl: 16-37EU / Nr: 0 | Spring/Summer/Autumn |

VARIETY FIT
OVERVIEW
WHOLEHEAD
LETTUCE

| VARIETY | SEGMENT | RESISTANCES: <i>Bremia</i> (Bl) / <i>NASONOVIA</i> (Nr) / <i>FUSARIUM OXYSPORUM</i> (Fol) |
|-------------|-------------------------------------|---|
| CHALLENGE | ICEBERG | (HR) Bl: 17, 19, 22, 27-28, 30-31, 37EU / Fol: 4 / (IR) LMV: 1 |
| ICE CALLA | ICEBERG | (HR) Bl: 16-32, 34, 36EU / Fol: 4 / TBSV |
| ICE CASTLE | ICEBERG | (HR) Bl: 16-29, 32, 34, 36EU / Nr: 0 / Fol: 1, 4 / TBSV |
| ICE CIRCLE | ICEBERG | (HR) Bl: 16-37EU / Nr: 0 / Fol: 4 / TBSV |
| ICE WAVE | ICEBERG | (HR) Bl: 16-37EU / Nr: 0 / TBSV |
| ICE RING | ICEBERG | (HR) Bl: 16, 18-37EU / Nr: 0 / Fol: 4 / TBSV |
| ICE MUSIC | ICEBERG | (HR) Bl: 16-37EU / Nr: 0 / Fol: 4 / TBSV |
| ICE PARTY | ICEBERG | (HR) Bl: 16-37EU / Nr: 0 / Fol: 4 / TBSV |
| ICE JAZZ | ICEBERG | (HR) Bl: 16-37EU / Nr: 0 / Fol: 4 |
| ICE ELECTRO | ICEBERG | (HR) Bl: 16-37EU / Nr: 0 / Fol: 4 / TBSV |
| ICE POP | ICEBERG | (HR) Bl: 16-37EU / Nr: 0 / Fol: 4 / TBSV |
| CRISPAGIO | ICECOS | (HR) Bl: 16, 18-20, 22-24, 27-28, 30-32EU |
| ACTINA | ROMAINE | (HR) Bl: 16-28, 30-32, 37EU / Nr: 0 / Fol: 1, 4 |
| PIVOTAL | ROMAINE | (HR) Bl: 16-29, 32, 34, 36EU / Fol: 4 |
| TYPICAL | ROMAINE | (HR) Bl: 16-37EU / Nr: 0 / Fol: 1 / TBSV |
| CASUAL | ROMAINE | (HR) Bl: 16-37EU / Nr: 0 / TBSV |
| BELENDRA | ROMAINE - MINI | (HR) Bl: 16-35, 37EU |
| DECINA | COS | (HR) Bl: 16-37EU / Nr: 0 / Fol: 1 / TBSV |
| YAKINA | COS | (HR) Bl: 16-37EU / Nr: 0 / Fol: 1 / TBSV |
| TAMAGO | MINI COS | (HR) Bl: 16-20, 22-25, 28-30, 33-37EU / Nr: 0 / Fol: 1 / TBSV |
| IZIGO | MINI COS | (HR) Bl: 16-37EU / Nr: 0 / TBSV |
| GREENSPY | SPECIALITY - MINI COSBERG | (HR) Bl: 16-37EU / Nr: 0 |
| CANAGIO | GEM | (HR) Bl: 16-36EU / Nr: 0 |
| DRACOS | GEM | (HR) Bl: 16-30, 32, 34, 36, 37EU / Nr: 0 / Fol: 4 (IR) LMV: 1 |
| HENROS | GEM | (HR) Bl: 16-28, 30-32EU / Nr: 0 |
| HYDROS | GEM | (HR) Bl: 16-35, 37EU |
| PHELAGO | SWEET GEM | (HR) Bl: 16-37EU / Nr: 0 / TBSV (HR) / (IR) LMV: 1 |
| MERINOS | GEM | (HR) Bl: 16-37EU / TBSV (HR) |
| DARIO | SPECIALITY - RED INCISED MULTILEAF | (HR) Bl: 16-37EU / Nr: 0 |
| CORIOLE | SPECIALITY - GREEN BATAVIA | (HR) Bl: 16-35, 37EU / Nr: 0 / (IR) LMV: 1 |
| PAROLE | SPECIALITY - GREEN BATAVIA | (HR) Bl: 16-35, 37EU / Nr: 0 / (IR) LMV: 1 |
| CHEROLA | SPECIALITY - GREEN BATAVIA - INDOOR | (HR) Bl: 16-35, 37EU |
| PRODIGIO | SPECIALITY - GREEN BELLAGIO | (HR) Bl: 16-37EU / Nr: 0 |
| CANAGIO | SPECIALITY | (HR) Bl: 16-37 EU / NR: 0 |
| RUBAGIO | SPECIALITY - RED BELLAGIO | (HR) Bl: 16-37EU / Nr: 0 |
| GREWGER | SPECIALITY - MINIBERG | (HR) Bl: 16, 18-21, 23-26, 28-37EU |
| LMUL19-1911 | SPECIALITY | (HR) Bl: 16-37EU / Nr: 0 / TBSV (HR) / (IR) LMV: 1 |

DISCOVER OUR BABYLEAF VARIETIES

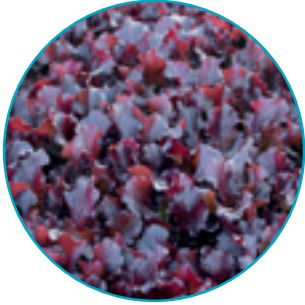
“Lettuce varieties for Hydroponic of Syngenta has very high quality, which ensures good yield through the year. Besides that sweet taste and crispy structure make varieties reliable for the customer”



MEET THE EXPERT

Sanna Hasila
Technical Sales
Representative (Nordics)

Our Babyleaf Lettuce Varieties



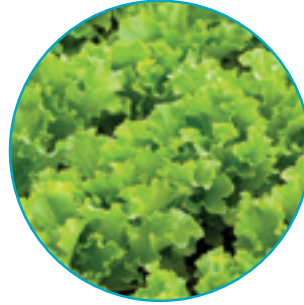
LS18054
Adelita II

True red Batavia with excellent dark cherry red colour

- Even leaf size
- Flexible leaf
- Upright growth for easy harvest
- Brilliant cherry red throughout the whole leaf
- Very uniform crop
- Remarkable leaf uniformity
- Strong resistance package

SUMMARY

| Segment | Resistances |
|--------------------|-----------------------------------|
| Babyleaf – Batavia | Bl: 16-37EU / Nr: 0 / Fol:1, TBSV |



Flavita

Dark shiny baby green Batavia

- Intensive fresh green colour
- Long harvesting window!
- Good leaf shape – not too wide and 3D-shape
- Slower growing green Batavia for Babyleaf production
- Small cutting point

SUMMARY

| Segment | Resistances |
|------------------|----------------------|
| Babyleaf lettuce | Bl: 16-37EU / Fol: 1 |



LBABI9-1937

Very thick leaf green Batavia

- Thick upright green Batavia leaves
- Extra crispy texture
- High yielding variety
- Long shelf life
- Frilly margin around leaf

SUMMARY

| Segment | Resistances |
|---------------|----------------------------|
| Green Batavia | Bl: 16-37EU / Nr: 0 / TBSV |



Yelita

Fast growing green Batavia

- Bright green colour
- Fast growing
- Good volume
- High uniformity of growth

SUMMARY

| Segment | Resistances |
|---------------|------------------------------------|
| Green Batavia | Bl: 16-37EU / Nr: 0 / Fol:1 / TBSV |

Our Babyleaf Lettuce Varieties



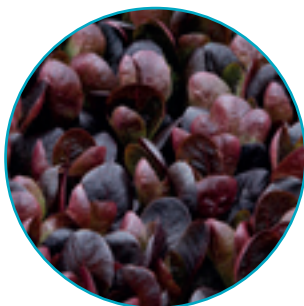
LS16033 Lennita

Brand new red Batavia lollo

- Dark shiny red colour
- Versatile
- 3D shape leaf
- Thick and wide leaf
- High yielding
- Excellent quality
- Good colour penetration

SUMMARY

| Segment | Resistances |
|---------------------------------|----------------------------|
| Babyleaf – Red Lollo/Batavia | Bl: 16-37EU / Nr: 0 / TBSV |



Kerrita

Good early variety with deep coloured, even shaped leaf, strong enough for processing

- Super dark red baby cos
- Strong processable leaf
- Good leaf shape and colour
- Excellent field holding and yield
- Good earliness
- High downy mildew resistance
- Thick leaf with narrow petiole and not too large leaf

SUMMARY

| Segment | Resistances |
|------------------|---------------------|
| Babyleaf lettuce | Bl: 16-37EU / Fol:4 |



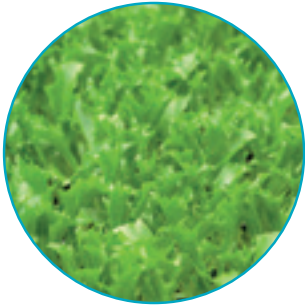
LS17046 Crackita

Brand new slow growing version of Crispita II

- Crispy leaf
- Mid green colour
- Slower growing than Crispita II
- Excellent 3D leaf

SUMMARY

| Segment | Resistances |
|------------------|--------------------|
| Babyleaf lettuce | Bl: 16-37EU / TBSV |



Crispita II

Unique robust, crisp baby leaf lettuce with a sweet taste, narrow petiole and frilly 3D leaf shape

- Good field holding
- Good shelf life
- Crispy and crunchy with sweet taste
- Unique leaf shape and very good 3D structure
- High yielding when compared to standard baby green lettuce
- Suitable for both outdoor and protected production
- Good yield, excellent taste and wide harvesting window

SUMMARY

| Segment | Resistances |
|------------------|---------------------|
| Babyleaf Iceberg | Bl: 16-37EU / Fol:4 |



LS16037 Red Crispita II

The red equivalent of Crispita II

- First red crispy baby leaf on the market
- Narrow petiole
- Excellent colour penetration
- Excellent 3D-shape for volume in the bag
- Good field standing ability
- Very good harvesting window

SUMMARY

| Segment | Resistances |
|------------------|--------------------|
| Babyleaf lettuce | Bl: 16-37EU / TBSV |



LBAB19-1938 Rockita

Incised version of Crispita II

- High volume in the bag
- Excellent 3D shape
- Uniform growth
- Highly incised version of Crispita II
- Thick and crispy leaves

SUMMARY

| Segment | Resistances |
|--------------|--------------------|
| Green Crispy | Bl: 16-37EU / TBSV |

Our Babyleaf Lettuce Varieties



Sulfitra

Red Batavia with very thick leaves and a lovely cherry red colour

- Excellent colour
- Excellent shelf life
- High yields due to thick leaf
- Excellent mildew package
- Thick and crispy leaves

SUMMARY

| Segment | Resistances |
|-------------|----------------------|
| Red Batavia | Bl: 16-37EU / TBSV |
| Harvest | |
| | Spring/Summer/Autumn |



Sarrita

Brand new red oak

- Excellent colour penetration
- Dark red colour
- Good vigour
- Nice lobed oak shape

SUMMARY

| Segment | Resistances |
|---------|----------------------|
| Red Oak | Bl: 16-37EU / Fol: 1 |
| Harvest | |
| | Spring/Summer/Autumn |



LS18058 **Takita**

Baby green oak

- Fully resistant green oak
- Narrow cut point
- Good colour
- Fast growth

SUMMARY

| Segment | Resistances |
|------------------|----------------------|
| Babyleaf lettuce | Bl: 16-37EU / Nr: 0 |
| Harvest | |
| | Spring/Summer/Autumn |

VARIETY FIT
OVERVIEW
BABYLEAF
LETTUCE



| VARIETY | SEGMENT | COLOUR | RESISTANCES <i>Bremia</i> (BI) / <i>Nasonovia</i> (Nr) / <i>Fusarium oxysporum</i> (FOL) |
|-----------------|---------------|--------|--|
| MESCLITA | APOLLO | GREEN | BI: 16-37EU / Nr: 0 |
| STELLITA | APOLLO | GREEN | BI: 16-37EU / Nr: 0 |
| ADELITA II | BATAVIA | RED | BI: 16-37EU / Nr: 0 / Fol:1, TBSV |
| LBAB19-1937 | BATAVIA | GREEN | BI: 16-37EU / Nr: 0 / TBSV |
| FLAVITA | BATAVIA | GREEN | BI: 16-37EU / Fol: 1 |
| ROXXITA | BATAVIA | GREEN | BI: 16-37EU / Nr: 0 / TBSV |
| YELLITA | BATAVIA | GREEN | BI: 16-37EU / Nr: 0 / Fol:1 / TBSV |
| CLAUDITA | BATAVIA/LOLLO | RED | BI: 16-37EU / Fol:1, Fol:4 |
| CORTESITA | BATAVIA/LOLLO | RED | BI: 16-37EU / Fol: 1 |
| IZABITA | BATAVIA/LOLLO | RED | BI: 16-37EU / Fol:1, Fol:4 |
| LENNITA | BATAVIA/LOLLO | RED | BI: 16-37EU / Nr: 0 / TBSV |
| CUPIDITA | COS | RED | BI: 16, 18-37EU / Fol: 1 |
| KERRITA | COS | RED | BI: 16-37EU / Fol:4 |
| ROMANITA | COS | GREEN | BI: 16-37EU / Nr: 0 / Fol: 1 |
| CRACKITA | CRISPY | GREEN | BI: 16-37EU / TBSV |
| CRISPITA II | CRISPY | GREEN | BI: 16-37EU / Fol:4 |
| ICEVITA | CRISPY | GREEN | BI: 16-37EU / Nr: 0 / TBSV |
| RED CRISPITA II | CRISPY | RED | BI: 16-37EU / TBSV |
| ROCKITA | CRISPY | GREEN | BI: 16-37EU / TBSV |
| SULFITA | CRISPY | RED | BI: 16-37EU / TBSV |
| ALICITA | OAK | RED | BI: 16-37EU / Nr: 0 / Fol: 1 |
| SARRITA | OAK | RED | BI: 16-37EU / Fol: 1 |
| TAKITA | OAK | GREEN | BI: 16-37EU / Nr: 0 |

Our Babyleaf Spinach Varieties



LDSP999

El Bravo

Fast growing variety for spring/autumn production

- Medium fast growing variety in the El Tajin-segment
- Upright growth – easy to harvest and to pack
- Attractive dark green colour
- More round leaves than El Tajin
- Slightly savoyed

SUMMARY

| Segment | Resistances |
|------------------|-----------------------|
| Babyleaf Spinach | HR Pe: 1-7, 9-19 / Sv |
| Harvest | |
| Spring/Autumn | |



El Furio

The darkest green colour of our assortment

- Very dark colour
- Extra thick leaves
- Semi savoy leaf
- Good mildew package
- Resistance to *Stemphyllium*

SUMMARY

| Segment | Resistances |
|------------------|-----------------------|
| Babyleaf Spinach | HR Pe: 1-7, 9-19 / Sv |
| Harvest | |
| Spring/Autumn | |



El Giga

Fast growing variety for start and end of the season or overwinter under protection

- Fast growing
- Upright
- High yielding

SUMMARY

| Segment | Resistances |
|------------------|------------------|
| Babyleaf Spinach | HR Pe: 1-18 / Sv |
| Harvest | |
| Winter/Spring | |

MEET THE EXPERT

Henrik Pedersen
Senior Account Manager
(Nordics)



“Syngenta spinach breeding has for years been focused on quality for the babyleaf grower. Both agronomic traits like the highest level of Peronospora resistance & Stemphyllium resistance combined with thick dark semi savoyed leaves gives the grower as high an income as possible. We are there now with a commercial assortment for all season and a strong pipeline and a commitment for the future of babyleaf growing.”



 **El Halo**

New summer spinach with excellent yields and bolting tolerance

- Good bolting tolerance in mid summer
- Round leaves with a semi savoy texture
- Added *Stemphylium* resistance

SUMMARY

| Segment | Resistances | Harvest |
|------------------|-----------------------|---------|
| Babyleaf Spinach | HR Pe: 1-7, 9-19 / Sv | Summer |



LDSP980
 **El Lucio**

Thick leaves for the spring/autumn segment

- Dark green colour
- Smooth with a slight savoy
- Thick leaves
- Medium-long petiole
- Round to slightly oval leaf shape
- Medium-slow growth
- Good yield potential

SUMMARY

| Segment | Resistances | Harvest |
|------------------|---------------------------------|---------------|
| Babyleaf Spinach | HR Pe: 1-7, 9-19 / Sv, IR Pe: 8 | Spring/Autumn |



 **El Madison**

Dark green medium speed summer variety

- Very dark colour
- Semi savoy leaf
- Flexible variety for main season
- Extra thick leaves
- Medium growth speed

SUMMARY

| Segment | Resistances | Harvest |
|------------------|-----------------------|----------------------|
| Babyleaf Spinach | HR Pe: 1-7, 9-19 / Sv | Spring/Summer/Autumn |



 **El Swing**

Medium speed with excellent bolting tolerance

- Flexible variety for all season
- Semi savoy leaf
- High resistance package

SUMMARY

| Segment | Resistances | Harvest |
|------------------|------------------|----------------------|
| Babyleaf Spinach | HR Pe: 1-18 / Sv | Spring/Summer/Autumn |

VARIETY FIT
OVERVIEW
**BABYLEAF
SPINACH**

| VARIETY | LEAF SHAPE | SEGMENT | SAVOYNESS | RESISTANCES <i>Peronospora effusa</i> (Pe) and <i>Stemphylium vesicarium</i> (Sv) |
|------------|------------|----------------------|------------|---|
| EL BRAVO | OVAL | SPRING/AUTUMN | SMOOTH | Pe: 1-7, 9-19 / Sv |
| EL FURIO | ROUND | SPRING/AUTUMN | SEMI-SAVOY | Pe: 1-7, 9-19 / Sv |
| EL GIGA | OVAL | WINTER/SPRING | SMOOTH | Pe: 1-18 / Sv |
| EL HALO | ROUND | SUMMER | SAVOY | Pe: 1-7, 9-19 / Sv |
| EL LUCIO | ROUND | SPRING/AUTUMN | SMOOTH | Pe: 1-7, 9-19 / Sv |
| EL MADISON | OVAL | SPRING/SUMMER/AUTUMN | SEMI-SAVOY | Pe: 1-7, 9-19 / Sv |
| EL SWING | ROUND | SPRING/SUMMER/AUTUMN | SEMI-SAVOY | Pe: 1-18 / Sv |
| EL TAJIN | OVAL | SPRING/AUTUMN | SMOOTH | Pe: 1-9, 11-16, 18-19 / Sv |
| PUNGI | OVAL | SPRING/AUTUMN | SMOOTH | Pe: 1-12, 14-16, 19 |





Levels of Resistance

Two levels of resistance are defined:

High/standard resistance (HR*)

Plant varieties that highly restrict the growth and development of the specified pest or pathogen under normal pest or pathogen pressure when compared to susceptible varieties. These plant varieties may, however, exhibit some symptoms or damage under heavy pest or pathogen pressure.

Moderate/intermediate resistance (IR*)

Plant varieties that restrict the growth and development of the specified pest or pathogen, but may exhibit a greater range of symptoms or damage compared to high/standard resistant varieties. Moderately/intermediately resistant plant varieties will still show less severe symptoms or damage than susceptible plant varieties when grown under similar

environmental conditions and/or pest or pathogen pressure. Susceptibility is the inability of a plant variety to restrict the growth and development of a specified pest or pathogen.

The Vegetable Section of ISF recommends, as it pertains to biotic stress, that its members use the terms immunity, high/standard or moderate/intermediate resistance and susceptibility and to avoid the term tolerance in communications with their customers.

Tolerance is the ability of a plant variety to endure abiotic stress without serious consequences for growth, appearance and yield. Vegetable companies will continue to use tolerance for abiotic stress.

Fungal disease – what's it worth?

1% reduction in pack out
£90/ha*

*Excludes grading and transport.
Approximate figures based on Brussels sprouts output – 20 t/ha @ £450/t.

Growers can rely on good levels of resistance against *Mycosphaerella* (Ringspot) in our varieties and we go further in our ambition to deliver solutions.

We introduced the first Savoy cabbage varieties to the market to combine resistance against *Mycosphaerella*, white blister and clubroot. With unpredictable seasons, this combined resistance against several fungal diseases in one variety helps assure quality whatever the season.

Customer Services

Tel: 0845 2660014

Tel: +31 (0) 228 366 306

Email: VegetablesCSDesk.UK@syngenta.com

Technical enquiries

Tel: 0800 169 6058

Email: customer.services@syngenta.com

Syngenta UK Ltd

CPC4, Capital Park, Fulbourn, Cambridge CB21 5XE

Tel: 01223 883400 Fax: 01223 882195

Website: www.syngenta.co.uk

APRON® XL and MAXIM® 480FS are Registered Trademarks of a Syngenta Group Company. APRON XL (MAPP 14654) contains metalaxyl-M and MAXIM 480FS (MAPP 16725) contains fludioxonil. All other brand names used are Trademarks of other manufacturers in which proprietary rights may exist. Use plant protection products safely. **Always read the label and product information before use. For further information including warning phrases and symbols refer to the website www.syngenta.co.uk**

Syngenta UK Ltd, Registered in England No. 849037, CPC4, Capital Park, Fulbourn, Cambridge CB21 5XE.
Tel: 01223 883400 Fax: 01223 882195 Technical Enquiries Tel: 0800 169 6058
Email: customer.services@syngenta.com ©Syngenta Feb 2022. 11674.

Syngenta Seeds Vegetables has exercised reasonable care and skill in compiling this brochure.

All resistances quoted refer only to strains of races or pathotypes indicated on the varieties. Other pathogen races or pest biotypes capable of overcoming the resistance may exist or emerge.

Syngenta Seeds Vegetables uses highly elaborate analytical methods to verify specific variety resistances. Specificity of pests or pathogens may vary over time and depends on environmental factors.

In order to maximise the efficiency of a resistance, it is highly recommended to mix different ways of control such as growing conditions, plant protection products and genetic resistance as part of an integrated crop management.

The Syngenta resistance against Clubroot is effective against the predominant races Pb:0 and Pb:1 and against the less frequent race Pb:3 but not against the infrequent race Pb:2 that may occur in some fields.

Genetic resistance is only one of the tools to manage Clubroot. Cultural measures such as liming, use of fertilisers with high percentage of calcium, proper drainage, good crop hygiene management are several important components of an integrated approach to manage the disease.

We always recommend to first execute small variety trials before starting commercial production of a new variety.

Spinach leaf spots can be caused by many different fungus; i.e. *Peronospora effusa*, *Stemphylium* spp., *Cladosporium variabile*, *Colletotrichum dematium* which are not always monitored by EU authorities.

Syngenta identified high resistance (HR) in our genetic to at least one *Stemphylium* specie that we identified & isolated from many leafspot samples over the last few years & in different EU countries.

The latest International Seed Federation (I.S.F.) terms and definitions describing the reaction of plants to pests and pathogens and to abiotic stresses for the vegetable seed industry are hereby incorporated by reference. The meaning of such terms in any related statement made by Syngenta shall be as provided by the I.S.F. If Syngenta adopts a proper term to define the reaction of plants to pests and pathogens and to abiotic stresses, Syngenta shall inform the customers of such term and of its definition.

All data in this brochure are intended for general guidance only and the user should apply it in accordance with their own knowledge and experience of local conditions. In case of doubt we recommend that a small scale production trial be carried out to determine how local conditions may affect the variety.

Syngenta Seeds Vegetables cannot accept any liability in connection with this brochure.