

ELATUS® ERA AND AMISTAR® OFFER EFFECTIVE SOLUTIONS WHEN APPLIED AT THE RIGHT TIME, CREATING THE PERFECT PARTNERSHIP FOR YOUR MAIN DISEASE TIMINGS

Chocolate spot, bean rust, and downy mildew pose challenges for bean growers as they can threaten yields and quality. These diseases survive in diverse conditions and spread rapidly, making timely and effective management necessary.

The trusted solution to bean rust and chocolate spot



Elatus® Era

ELATUS® Era provides exceptional control of rust and chocolate spot in both winter and spring beans.



Treated with ELATUS® Era



Untreated

Bean rust, caused by the fungus *Uromyces viciae-fabae*, spreads well in warm, dry weather. Orange/brown pustules develop on leaves which can cause defoliation, leading to significant yield loss if this is before pod fill.



Treated with ELATUS® Era



Untreated

Chocolate spot, caused by *Botrytis fabae* or *Botrytis cinerea*, begins as small brown spots on the leaves that merge into larger lesions. The disease thrives in wet spring conditions, with fungal spores dispersed by rain splash. Severe infection can result in yield losses of up to 50%.

Pulse protection perfected



Amistar®

AMISTAR® effectively combats all major bean diseases, including **downy mildew**, which manifests as pale patches on leaves and a greyish mauve fluffy growth beneath. This disease flourishes in cool, humid conditions and spreads via wind-borne spores and rain splash, potentially causing significant yield losses.

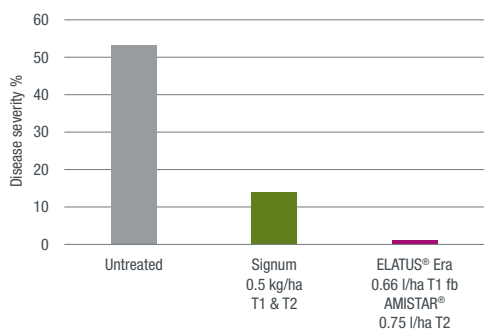


Downy mildew infection can start as early as April

TRIALS DATA

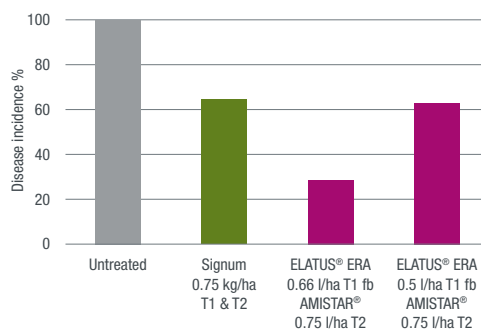
When used together in a disease management programme, ELATUS® ERA and AMISTAR® deliver outstanding disease control.

RUST CONTROL 25 DAYS AFTER T2 (DATA PGRO 2023)



ELATUS® Era at first pod timing (T1) followed by AMISTAR® gives excellent control of both chocolate spot and rust.

CHOCOLATE SPOT CONTROL 21 DAYS AFTER T2 MID CANOPY (DATA SYNGENTA 2021)

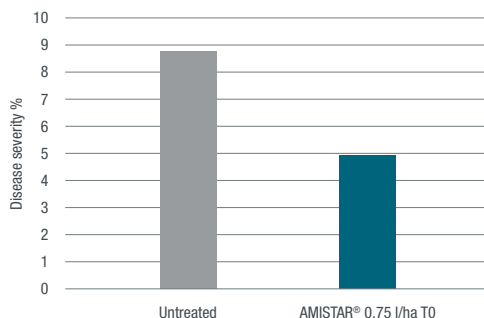


Our data supports the use of higher rates where chocolate spot pressure is high to ensure robust control.



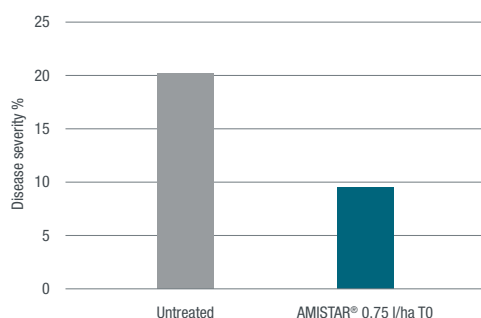
MAPP No: 17889
Approved use: Field Beans
Maximum individual dose: 0.66 l/ha
Maximum no. of applications: 1
Latest time of application: Up to and including 20% of pods having reached typical length (GS72)

CHOCOLATE SPOT AT EARLY TO TIMING IN WINTER BEANS 18 DAYS AFTER APPLICATION (DATA PGRO 2023)



PGRO trials data in 2023 illustrates how an additional application of AMISTAR® (T0) in winter beans provides early control of downy mildew and chocolate spot.

DOWNY MILDEW FOLLOWING EARLY TO TIMING IN WINTER BEANS 18 DAYS AFTER APPLICATION (DATA PGRO 2023)



MAPP No: 18039
Approved use: Field Beans
Maximum individual dose: 1.0 l/ha
Maximum no. of applications: 2
Latest time of application: 35 days before harvest, 21 day minimum application interval. FRAC guidelines must be followed

Where and when to prioritise ELATUS® Era and AMISTAR® use

Spring beans

Usually only require 2 applications

ELATUS® Era at T1 (first pod) controls chocolate spot and ensures a clean lower canopy. Early control of rust prevents severe infection later.

AMISTAR® at T2 (21 to 28 days after T1) gives activity against all the major bean diseases, especially rust.

Winter beans

May require 3 applications

AMISTAR® at T0 (early flowering) if downy mildew and chocolate spot are present.

ELATUS® Era at T1 (first pod) controls chocolate spot and ensures a clean lower canopy. Early control of rust prevents severe infection later.

AMISTAR® at T2 (21 to 28 days after T1) gives activity against all the major bean diseases, especially rust.

APPLICATION ADVICE

3D Ninety nozzle alternating forward and backward along the boom for improved coverage.

